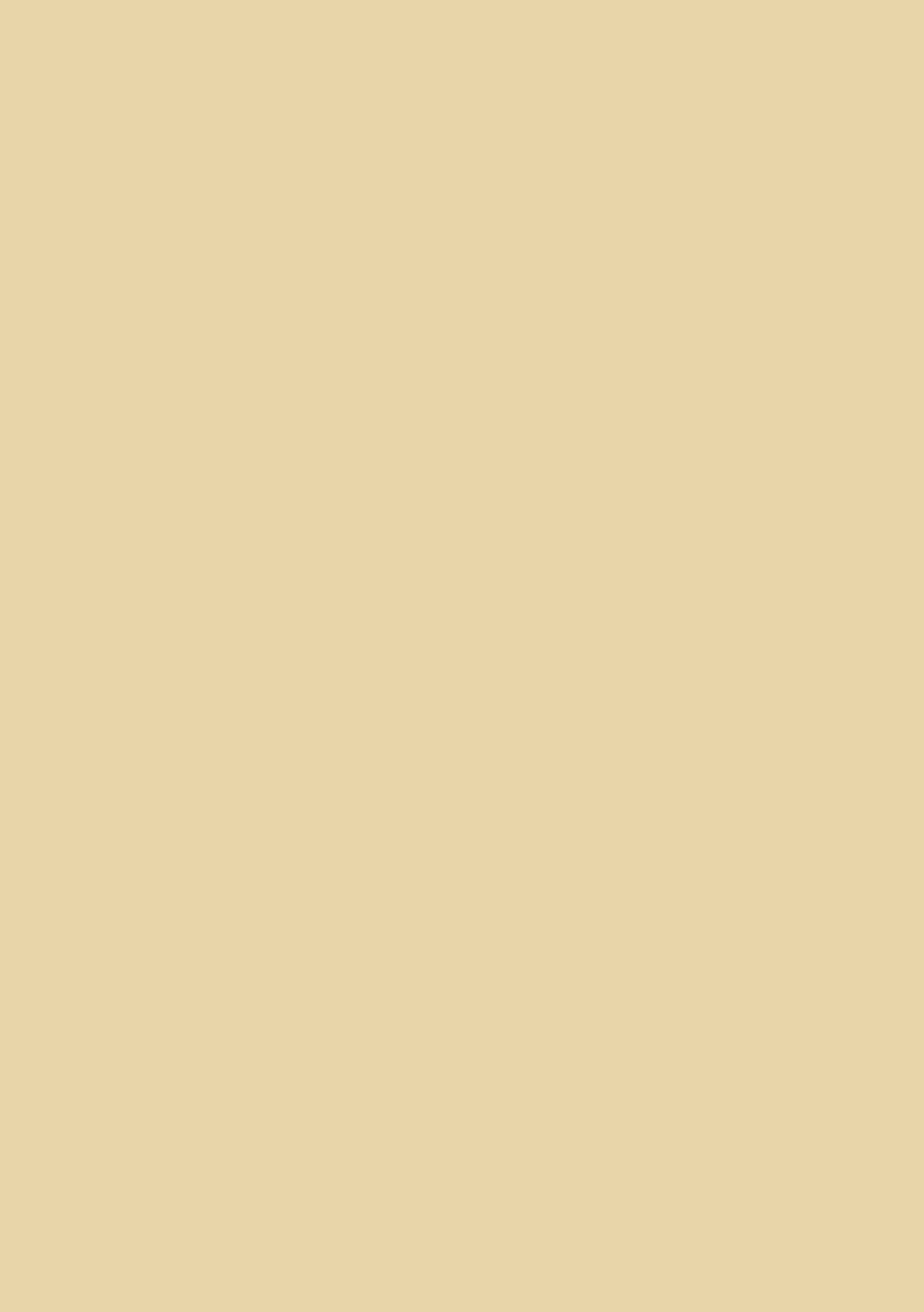


Spring '23



.mdd



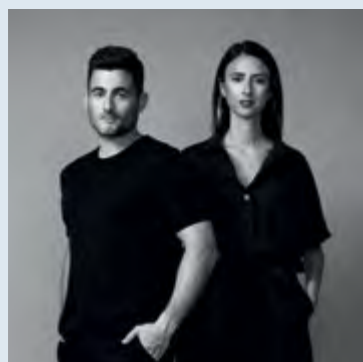
Contents

Paralel in the words of the designers	4
Paralel	8
Baltic	10
Ismo	16
Artiko	20
Grace	24
Unit in the words of the designer	30
Team	34
Unit	36
New School	40
Stilt	44
Pental	50
Sustainability	52
Viga	56
Fat frank	62
Ogi	64
Gravity	68
Ramo	72
Acoustics	74
Designers	78
Certificates	80



“The Paralel seating collection is the newest addition to the .mdd offer. The family features customisable executive and conference armchairs with organic backrests that wrap comfortably around the user.”

Paralel in the words of the designers



Yonoh Studio

Moved by sensations and intuition, Yonoh stays away from trends in order to stay true to its own voice: the one that keeps creative independence and honesty as its core values.

What was the inspiration behind Paralel chairs?

Y – With the Paralel family, we wanted to explore the process of developing a collection of executive and conference seating from the perspective of two parallel lines. The idea was for them to wrap around the sitting user. It was a bit of a challenge to find the exact location of those lines so that they will favour the comfort of the user and, simultaneously, allow for their freedom of movement. In its conception, the idea is a simple one, yet complicated when it comes to finding the final proportions. That’s precisely how we like to talk about Paralel: a game of proportions. By playing with them, we have accomplished our goal and achieved a balance of form and function.

Aesthetically, the very same form, the organic shape of the Paralel chair was also inspired by leaves growing from a branch. We see the shape in the backrest, as it unfolds around the user, thus creating a more intimate and natural niche for them, just as a canopy of a tree does.



Paralel Armchair

What were the features you wanted Paralel to have?

Y – For us, the priority was the backrest. It was crucial to create one that can wrap around the seat and the user. Our aim was to design a two-piece product with high versatility. To achieve that, we worked on providing the seat with three backrest heights, but always having in mind that the outcome should look like a single-piece unit. It was also important for us to design a product with unlimited configuration possibilities: not only backrests but also bases and armrests. Thanks to that, Paralel chairs are customizable and therefore versatile.

Additionally, we have also provided the chair with a few available bases: 4-legged, 4-star and 5-star, there's also the option to add the castors. With so many options for Paralel's structure and, obviously, finishing, we've managed to design a real journey through parallel realities.

What was your design process for Paralel chairs?

Y – We usually start our work on a new project with concepts and ideas. In the case of Paralel chairs, we started by designing the three heights of the chair – beginning with the medium one. From there, we moved on to the high version (still in production development), bespoke for executive offices. The last one to be designed was the low version, which fits perfectly into meeting and conference rooms. Once the initial ideas were finished, we started developing the different options for the bases and the armrests. It has been a long and collaborative process, from which we have learned and improved our work, so we could achieve a product that will last.

What is the most important part of the design work for you?

Y – We always start by consolidating a concept and finding a convincing and satisfying storyline. For us, this is the most important stage of the design process, the part to which we devote the most attention. We work on various concepts of the design, comparing them and developing them. When we are content with the idea and the narrative, we move on to the actual design stage, where technique and aesthetics meet.

What do you like most about Paralel chairs?

Y – What we are most pleased with is how organic and functional the product is. We believe we have created a distinguishing and charming design, without any shrillness, and not attached to any short-term trends. For us, Paralel is the perfect office (more and more often now, home office) chair of the future.



Paralel Armchair
Gravity Executive Conference Table

“[...] we like to talk about Paralel: a game of proportions. By playing with them, we have accomplished our goal and achieved a balance of form and function.”

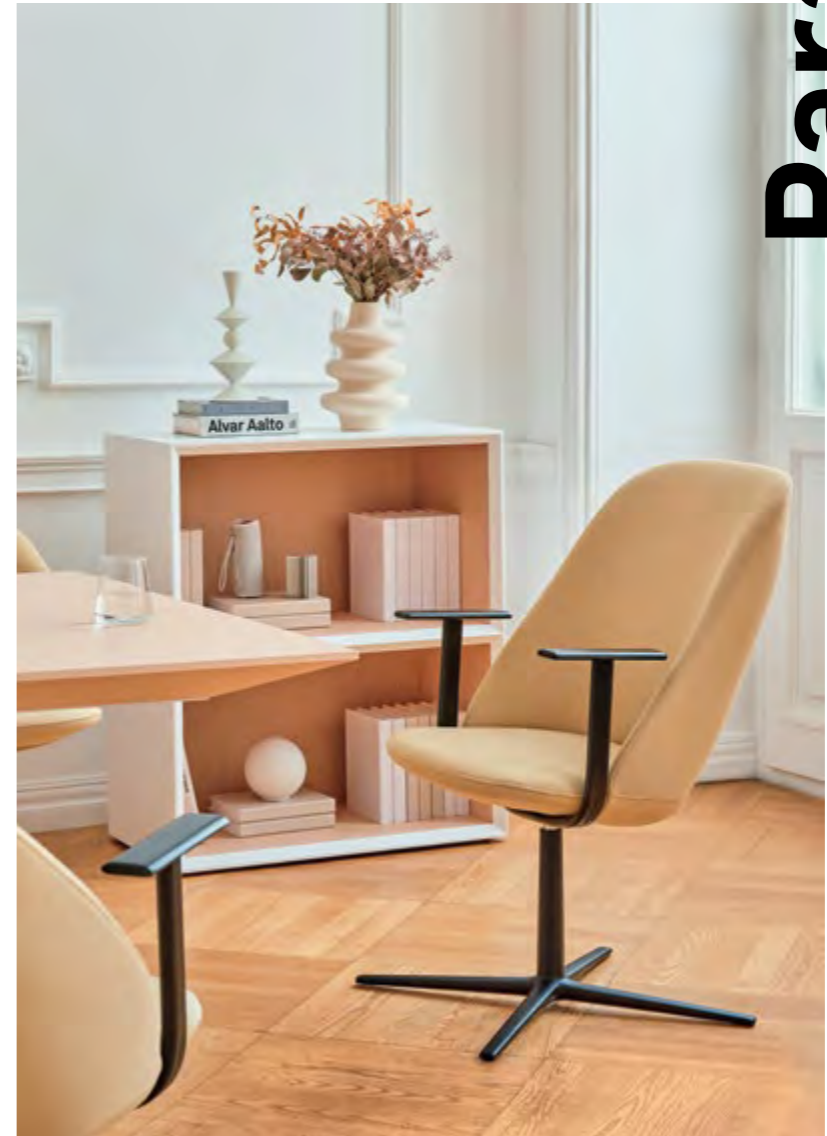
What do you have planned for the future?

Y – At the moment, we are developing a new series of aluminum bases and armrests for the Paralel seating family. In the next step, we would like to start working on bigger elements to be added to the collection, some new models – like a club chair or a lounge chair. We would like to extend the collection so that Paralel chairs can be used in various spaces and contexts.



Paralel Armchair
Unit Table

Paralel



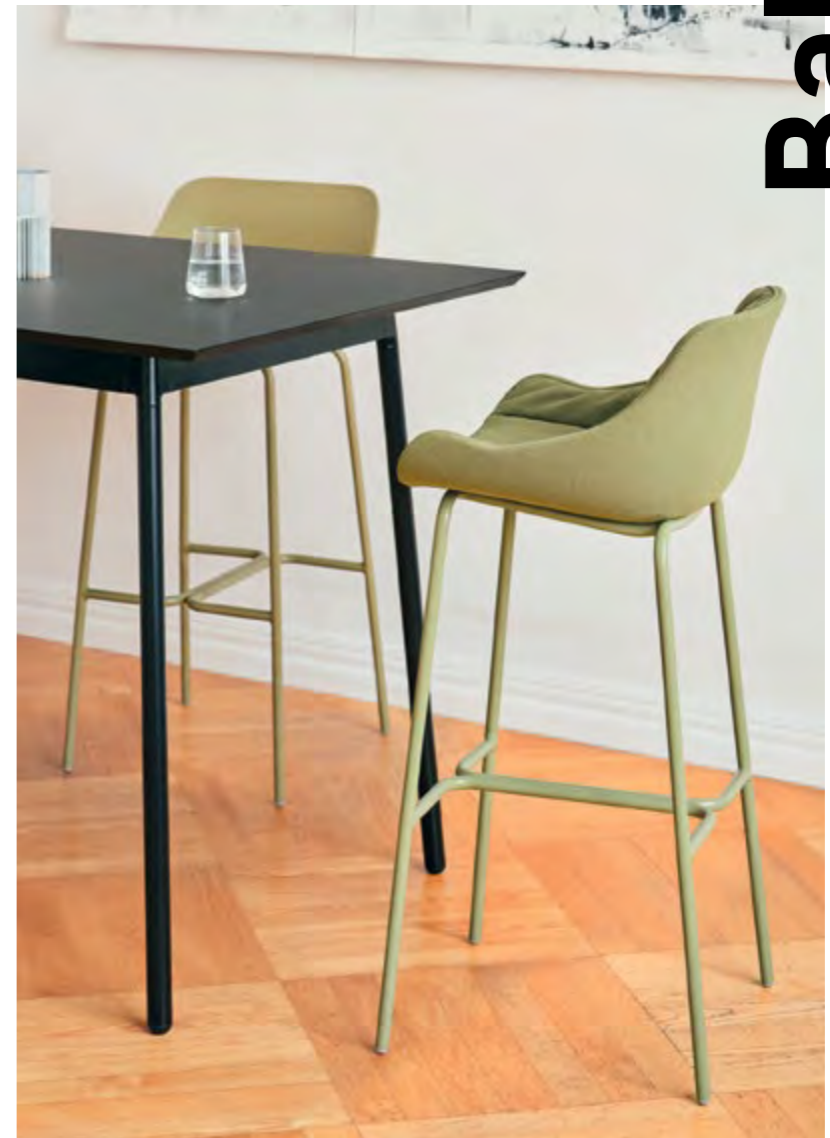
Paralel Armchair
Gravity Executive Cabinet

The most interesting feature of Paralel armchairs is the way the backrest unfolds around the user, thus creating a more intimate and natural space around them. The easy and minimalistic lines of the seat match with the raw, industrial-like modern star base. The backrest is also customisable; depending on the preferences, it can be selected amongst two heights: low chair-like, or higher version, typical for an office chair. With the detachable armrests, possibilities grow even more.



Baltic Soft Duo Chair
New School Table

Baltic



Baltic Soft Duo High Stool
Unit High Table

The Baltic family is comfortable but does not feel detached from everyday life. On the contrary, its practicality is exceeding expectations making it your obvious choice for daily activities. Baltic is a user oriented project that guarantees a diversity of use – from home office, conferences to relaxation and dining.





Baltic 2 Classic Chair
Swivel Base

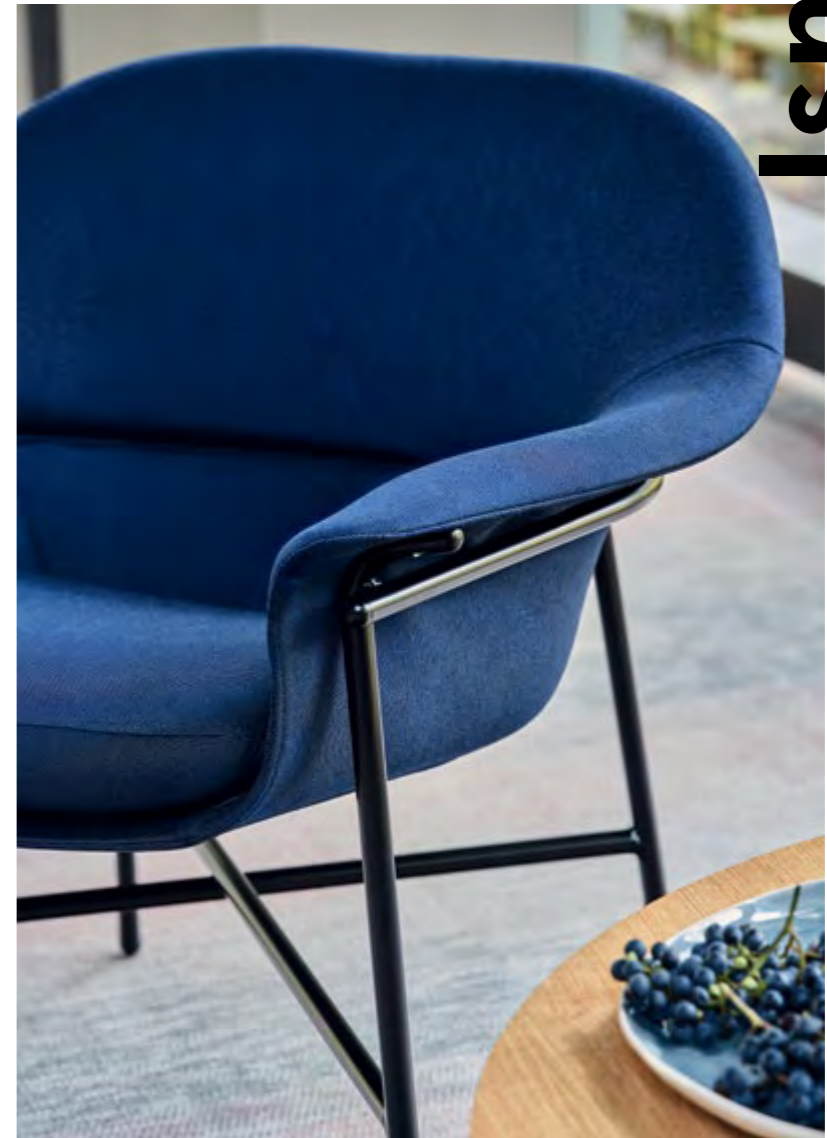
Upholstered seat with a cushion increases the comfort of use, even during long hours of working or studying. At the same time, the unique base, the characteristic feature of the Baltic collection, results in its modern form.



Baltic 2 Classic Chair
Unit Conference Table



Ismo



Ismo Armchair

Classical form, soft outline, sleek base and comfortable cushions are the essential features of the Ismo armchair. The untypical wide seat is supported on a sleek piping base, that hugs the backrest. Those contrasting parts make Ismo a modern and at the same time nostalgic piece of furniture. Its timeless, uncompromised design balances comfort and style.





Artiko Sofa
Ismo Armchair

Artiko



Artiko Sofa

In Esperanto, Artiko means "joint". Its elements are available in various shapes, with or without the backrest. Artiko modules can be joined in any number. From a pouf created by two segments, up to a snake-y sofa. As long as the corridor the seat can have any desired size. Due to that Artiko can be tailored to the space, regardless of its dimensions.





Grace Armchair
Grace Sofa

Grace



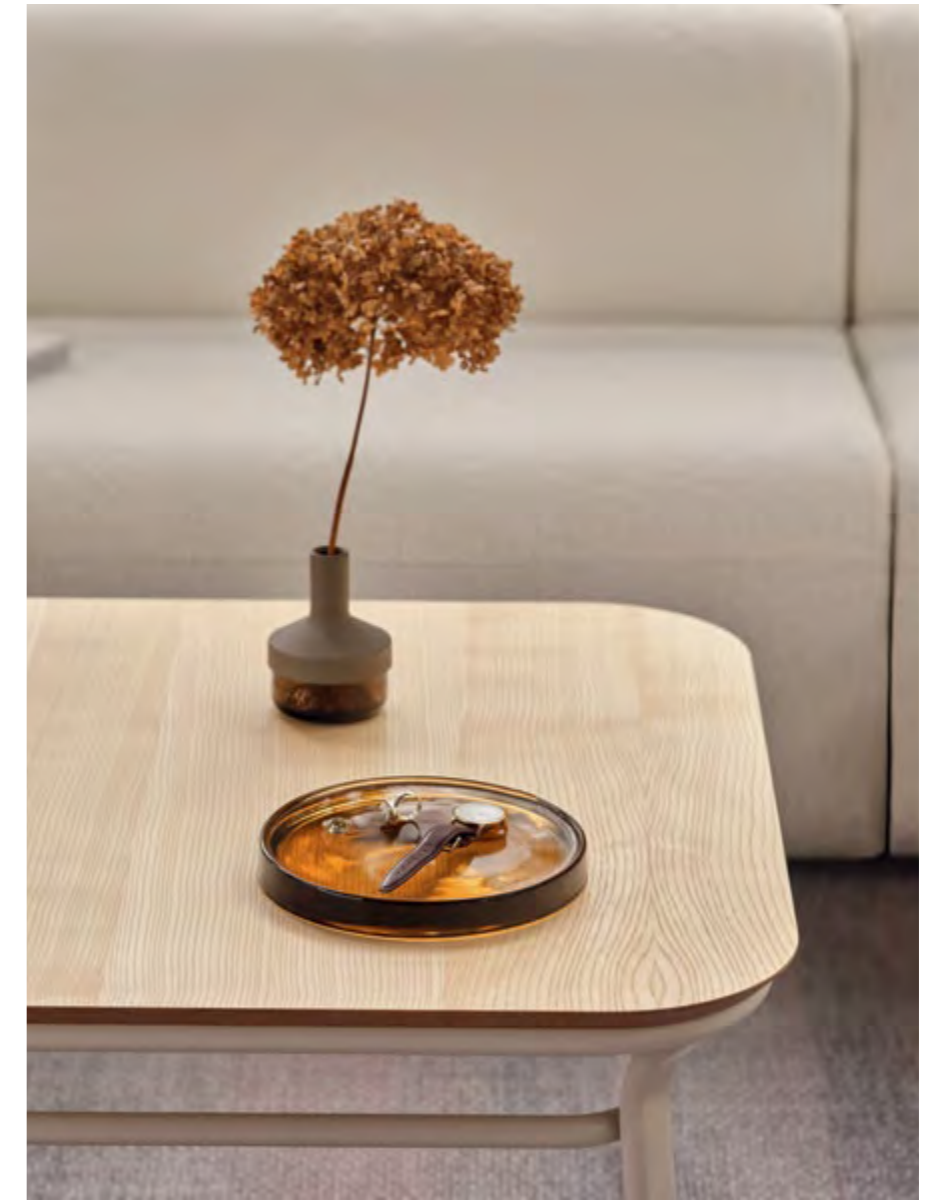
Grace Armchair

The function of the furniture, especially upholstered, has to include its comfort of use. Thus, it was the priority while designing the Grace collection. Closer attention has been paid to the shape of the backrests and the foam filling. As a result, the sculptural form of the chairs, armchairs, sofas and high stools invites to seat for a longer time.





Grace Chair
Unit Conference Table



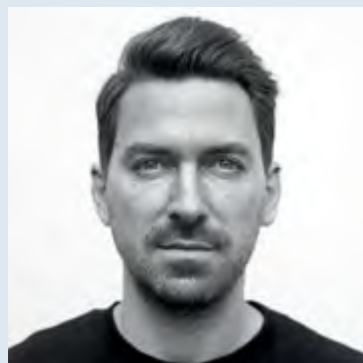
Grace Coffee Table
Artiko Sofa

The curved backrests of the chairs, armchairs, sofas and high stools wrap around the user, allowing them to rest comfortably. The furniture becomes a little relaxing space, no matter the surroundings. The seats, cast in the .mdd factory, are upholstered in high quality fabrics to enhance the feeling of comfort and softness even further.

“Unit is a family of tables in both two heights and various worktop sizes. Designed by Dirk Winkel, the designer of our Team collection, Unit tables are perfect for conference rooms, meeting spaces and lounge zones. They introduce elegance and functionality to all interiors.”

Unit in the words of the designer

mdd.eu



Dirk Winkel

I love exploring new materials and production processes, and I am driven by the belief in the beauty of a deeply geometrical formal purism. Careful consideration of every single radius, dimension and proportion of a design is the key to a sustainable expression.



mdd

Unit High Table
Baltic Soft Duo High Stool

What was the inspiration behind Unit tables?

D – With aluminium being a fully recyclable and therefore genuinely sustainable material, the inspiration behind the Unit tables was to make use of the beauty in the combination of two industrial processes, cast aluminium and extruded aluminium.

What were the features you wanted Unit to have?

D – I think the one great feature of Unit is that it is not only a table, but actually a system of table bases, so the potential of a versatile product family to be already a core part of the design was a key element. Visually, its clean lines support this versatility.

What is the structural heart of Unit tables?

D – The core of the Unit system is the corner element, a die-cast aluminium part. This is the element that bonds the frame with the legs, as it is connected to the aluminum traverse by a screw connection, and bonded to the steel legs. This way, the system's structural strength benefits from these different materials and processes.

What are the key aspects or details of Unit tables?

D – The structure of Unit tables is based on just three different die-cast corner elements in 90°, 120° and 180°-T angles. Due to that, the frame allows for a multitude of different configurations, like large, small, wide or round tables. Furthermore, the tables come in two heights for various applications, such as co-working, meeting, dining and office use.

What do you like most about Unit tables?

D – In terms of design, I especially enjoy the carefully developed details, mostly the exact radius definitions at the transition between corner and traverse. In the monochrome colour combinations with my favourite tabletop surface option Fenix, the outer appearance feels monolithic and smooth.

Do Unit tables have anything in common with your previous collection for .mdd, the Team chairs?

D – Both Unit and Team have been designed to work as a family, they complement each other and work really well in combination, both functionally and also visually.

“[...] inspiration behind the Unit tables was to make use of the beauty in the combination of two industrial processes, cast aluminium and extruded aluminium.”



Unit Conference Table
Team Chair Plastic



Team High Stool
New School High Table

Team



Team High Stool
Ogi High Table

Dirk Winkel was inspired by geometrical purism. This approach has allowed him to create a form that instantly matches interiors in different styles. Team is a collection of seats with various functions: chairs, stools and benches. They are all characterized by delicate lines, integrated backrest and sleek base.



Unit



Unit Conference Table
Grace Chair

Designed to complement the Team seating collection. Minimal forms allow for a coherent arrangement of the conference room and the canteen. Their characteristics are the craftsmanship precision and industrial details in the form of cast corners. Unit tables can be configured by choosing from various shapes and sizes of the worktop.





New School Table
New School Chair

New School



New School High Table
Baltic Soft Duo High Stool

Collection created out of nostalgia. Form Us With Love Design Studio was inspired by the familiar form of a traditional school chair. Its frame made of bent tubes was a starting point for a series of modern chairs and modular tables. The idea behind the New School collection is versatility and multi-contextuality.



New School High Stool



Form Us With Love

Good design is a hard question—it's in the eye of the beholder. However, if you can get the raw materials right, both for the interior and the product, then you are close.



New School High Table
Baltic High Stool



Stilt Bookcase
Pental Pouf

Stilt



Stilt Low Backed Sofa
Grace Coffee Table

The practicality of the office-oriented furniture and the warmth of a domestic ambiance. Stilt brings what's best of the two worlds, resulting in superior adaptability in a wide range of interiors. The range includes modular bookcases, comfortable sofas and armchairs, as well as practical poufs.





Pental Coffee Table
Grace Sofa

Pental



Pental Coffee Table
Stilt Bookcase

With the new Pental table, Yonoh Studio wanted to explore the multiple possibilities provided by a pentagonal shape, hence its name. From a sleek, yet resistant structure of interlaced rods, Pental grows to become a modern wheeled coffee table. The collection is complemented with a pouf. Available in two widths, and in the finest selection of fabrics and colours of the powder coated base, Pental will seamlessly match any interior.

Electrical power

In 2022 we completed an investment for the expansion of solar panels by 1 mW of energy. This has provided us with an area of 10,000 m². The solar power is now 200 kWP (kilowatt peak). Thanks to this investment, the generated energy will cover most of the energy demand for the factory in Sępólno Krajeńskie.

Incinerator

We have started the process of replacing the old furnaces with a new, environmentally friendly incinerator. The new furnaces will reduce the emission of harmful dust and gases thanks to the electrostatic precipitators used. The incinerator decreases the need to dispose parts of the waste that are used as raw material during the thermal transformation of wood-based panels. The investment has all the necessary environmental permits.

Transport

1/5 of the transports leaving the factory are return transports, which carry our waste. This aims to reduce any unnecessary exhaust emissions by making a full use of all scheduled transports and not sending out empty vehicles.

Thanks to the automatic warehouse of furniture boards, the internal trolley transport is reduced to the minimum. The distribution of the boards is carried out by an electrical robot arm.

Eco-friendly packaging

We have replaced styrofoam filling of our boxes with cardboard with a “honeycomb” cross-section. Furthermore, when larger quantities of the same product are ordered, we use bulk packaging to minimize consecutive waste. We can pack up to 4 chairs in one package.

In the case of lighter packages and those handled by a pallet courier, we have replaced classic wooden pallets with paper ones produced on site, in the factory. We are trying to limit the number of subcontractors, therefore our own cartoner helps us in the packaging process. The automated machine enables the optimization of the material consumption and generation of unnecessary waste.



Mesh Armchair

“The absence of third-party logistics means a more straightforward approach when planning; the products are delivered directly to the customer, reducing not only timings but extra fuel used if third parties were involved.”

Regranulate

The injection moulded elements that do not meet our standards are converted into regranulate and later reused for following injection processes. An example of such elements is a bicoloured plastic seat obtained while changing the colour granules on the injection moulding machine. It will be either used in an upholstered chair or reground and reused in the production of new components. We are planning to fully automate processes of grinding and regranulation.

Machinery

The use of optimal fabric lamination technology and cutting technologies with machines like the Cutter, has significantly lowered the volume of the material waste and the amount needed to manufacture the goods. By using new machinery, the production complies with the highest energy usage standards, with an energy-saving mode prompting the systems into a “suspension” mode when not in use.

Powder-coating room

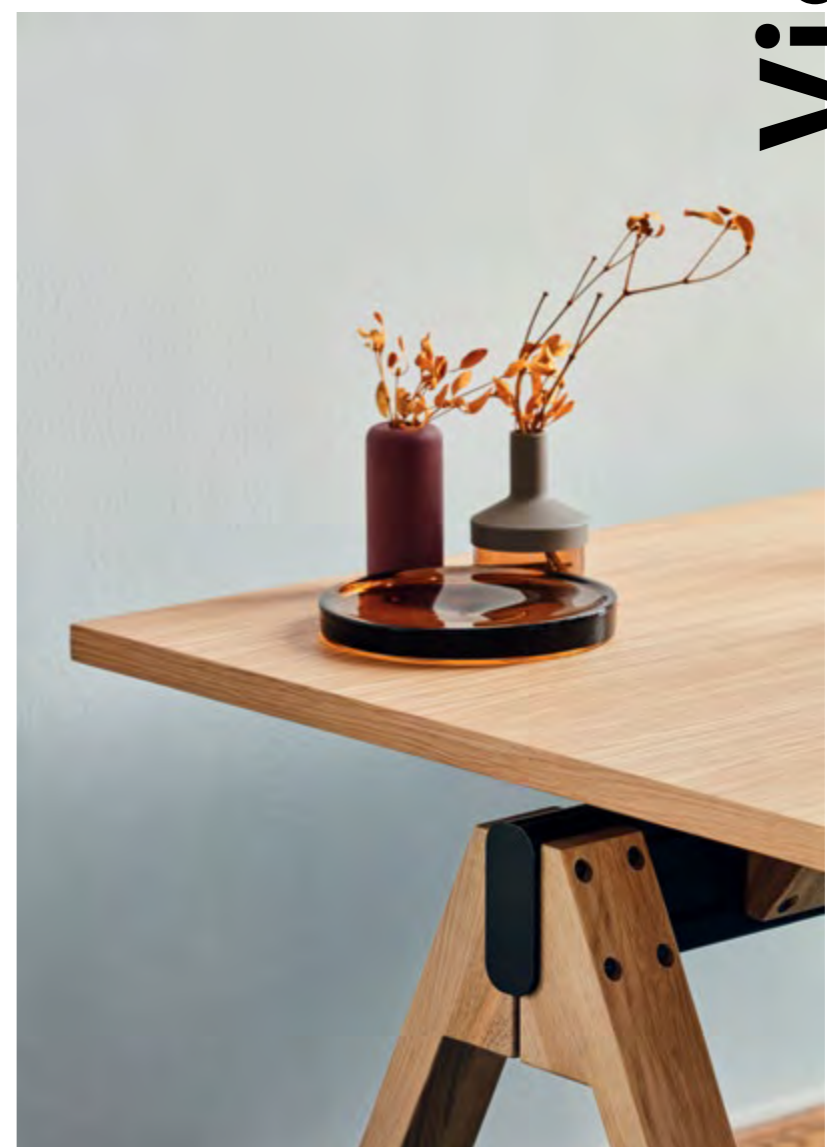
Thanks to the use of powder paints, we have reduced the emission of volatile organic compounds to a minimum. In addition, the powder coating process allows us to recover up to 95% of the raw material that wasn't used, as it is collected and used for the following painting sessions. We have also introduced a new type of powder, that has enabled us to consume less electricity, thanks to lower baking temperatures of the painted elements.

“All .mdd products have been checked for environmental and health regulations. No forbidden hazardous chemicals (in accordance to REACH) have been used during the production process, guaranteeing it's safe to use.”





Viga Conference Table
Baltic 2 Classic Chair



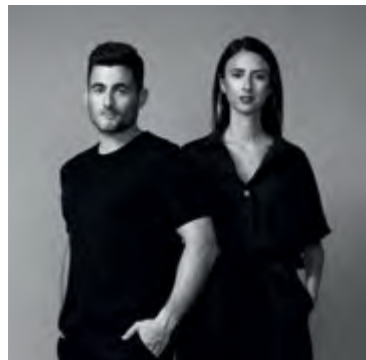
Viga Desk

Stepping aside from trends, the idea behind the Viga family has always been providing both, private users and companies, the perfect environment for a redefined workspace. Alex and Clara, the minds behind Yonoh Studio, wanted to create an entirely new system keeping versatility and adaptiveness in mind.

Viga



Viga Cabinet
Baltic Classic Chair



Yonoh Studio

Moved by sensations and intuition, Yonoh stays away from trends in order to stay true to its own voice: the one that keeps creative independence and honesty as its core values.



Viga Sideboard



mdd

mdd.eu

mdd



Fat Frank Armchair
Fat Frank Footrest

Fat Frank



Fat Frank Armchair
Fat Frank Footrest

Quality workmanship and maximum comfort – Fat Frank armchair was created in accordance with the ergonomic principles to create an atmosphere of domestic freedom in the office space. Its ingenious design allowed preserving the convenience of an office armchair in a minimalistic form.



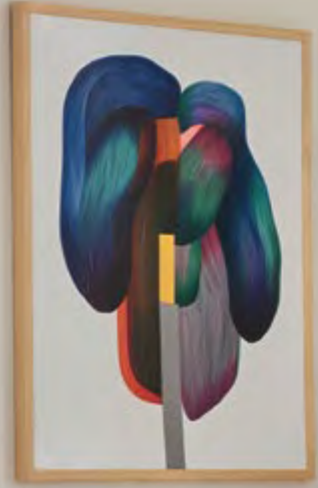
Ogi Drive Bench Desk
Evo Office Chair

Ogi



Ogi T Desk
Baltic Classic Chair

The office desks intended for modern spaces, as well as those that design is closely related to the home environment. Available in a wide range of variants. This way, it is possible to arrange workplaces of various characters. Electric desks, for instance, fit both classic and modern interiors. Those desks allow working in a sit/stand mode. The enthusiasts of classic solutions are able to select between traditional desks. Each model stands out with its workmanship and high quality of materials to support multitasking.





Gravity Executive Conference Table
Baltic Soft Duo Chair

Gravity



Gravity Executive Conference Table
Baltic Classic Chair

Firm and comfortable, despite the gravity – Gravity conference table from the Gravity collection is a perfect example of combining massive elements with a minimalist design. A large worktop with one support point and a hidden supporting structure will add a modern touch to any interior.



Gravity Executive Desk

Minimalistic form, inspired by modern architecture, has been integrated with technology. The Gravity range also consists of: height adjustable conference table, coffee table and modular storage system. This unique desk is a bold proposal addressed to modern leaders.

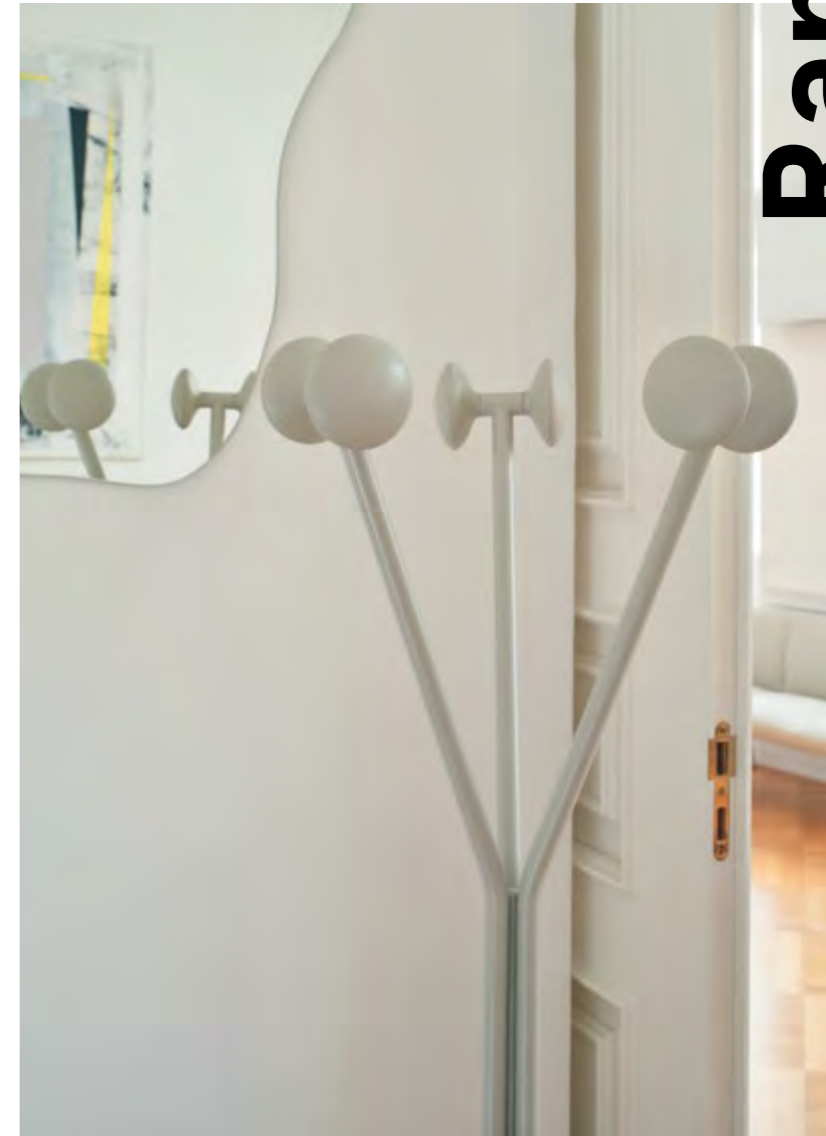


Gravity Executive Cabinet
Baltic Soft Duo Chair



Ramo Coat Stand
Grace Armchair

Ramo



Ramo Coat Stand

In Italian, Ramo means “branch” – and the Ramo coat stand designed by Maria Jeglińska-Adamczewska resembles a tree. Its lightweight steel construction with knobs made of solid wood will provide a steady support for coats and other hanging items. The classic three-armed form with distinctive details will be a stylish addition to interiors arranged in various styles.

Acoustics

As a manufacturer of office furniture, we are aware of the importance of the acoustic properties of the workspace. To fulfil this requirement of the market, we have introduced a few acoustic products into our offer. The most important of these are the acoustic screens. Available in numerous sizes and types and applications, they can be adjusted to the needs of the space and its users. Thanks to this abundance of options, our offer is tailor-made for offices, coworking spaces, libraries, universities and other places of work or education.

Our acoustic technology

Sonic technology has been developed to maximise the acoustic properties of our products. It is based on a sandwich construction of carefully selected material layers. The chipboard frame shelters the acoustic nonwoven filling with high absorption and dispersion properties. Together, they are upholstered in high-quality fabrics, that further enhance the attributes of the whole. The acoustic absorption of the technology has been proven by chamber method testing, and as a result by the A-class certificate, compliant with the PN-EN ISO 354:2005 standard.

The Sonic technology has found application in various products from our offer, with the primary one being the acoustic screens of the same name.

Our acoustic screens

As an application of this technology, our acoustic screens can significantly and effectively improve the conditions of the interior. Amongst the Sonic collection, they come in numerous models – suitable for walls, ceilings and desks, as well as freestanding. Further, there is a variety of sizes and a wide range of upholstery fabrics, which makes them a versatile tool for finishing the arrangement of the office and other working spaces. Sonic screens can be hung on the wall or the ceiling, fixed to a desk or standing. They also allow the user to play with finishing materials and colours, making the interior more friendly and welcoming.

Our desk screens

Sonic screens for desks come in sizes matching the desks and benches in our offer. There are also versions adjusted to the sliding worktop. Depending on the chosen model, they can be fixed to the worktop or to the frame. The user has the possibility to choose the type and thus the location of the screen: front, side, cross or in the middle of bench worktops. Sonic screens used as desk panels can be equipped with the accessories rail, which can be equipped with practical add-ons: monitor holders, pencil cases, shelves, organisers and many others.

Apart from increasing the acoustic conditions, adding the panels help create some semi-private workstations, as they designate the space around the employee. Being pinnable, they can serve as a place for notes and mood boards.

“Our acoustic screens allow the user to play with finishing materials and colours, making the interior more friendly and welcoming.”



Sonic Acoustic Desk Panel
Ogi Y Bench Desk



Mix Wall Panel
Ismo Armchair

Our ceiling screens

Another variety of Sonic screens are the ones designed to be hung from the ceiling. Again, there are a few options amongst them, as they can be fixed in three ways: parallel to the ceiling, vertically (by the shorter edge) or horizontally (by the longer edge). Additionally, for the perpendicular screens, a rail can be added to hang them in a row.

Sonic ceiling screens are available in a variety of upholstery fabrics, and thus colours. As such, they provide a platform to brighten the space up, becoming an untypical decoration. All that, while improving the acoustic conditions of the interior.

Our wall screens

A great way to mute the interior and increase its acoustic properties is to put upholstered screens on its walls. Wall padding is the primary method of soundproofing the space, also possible with the help of Sonic technology. Those models are equipped with a hanger that makes the installation extremely easy.

Sonic wall panels are available in four sizes and can be hung both vertically and horizontally. There is a wide range of upholstery materials and an array of colours. As a result, they become creative decoration that makes the space more friendly and fun.

Our freestanding screens

Last but not least, Sonic screens come in a freestanding version. They are available in four widths and four heights, allowing the user to play with the layout. Further options include stationary feet or mobile ones, with castors and various connectors. Standing panels can be joined into rows and corners, as well as clusters of three or four. Not only do they improve the acoustics of the interior, but also function as partition walls, designating the space and creating smaller zones in it. Being moveable, they can also easily be rearranged to match current needs.

The widest version can have a magnetic dry-wipe whiteboard attached, serving the users during meetings, teamwork sessions, presentations and training. They're perfect for taking notes and clipping important papers or images.

Designers



Gudmundur Ludvik

I am intrigued by the balance between simplicity and complexity. Exploring challenges through multiple perspectives helps me in understanding and reducing them to the core and transforming into simple and intuitive solutions.



Dirk Winkel

I love exploring new materials and production processes, and I am driven by belief in the beauty of a deeply geometrical formal purism. Careful consideration of every single radius, dimension and proportion of a design is the key to a sustainable formal expression.



Form Us With Love

Good design is a hard question—it's in the eye of the beholder. However, if you can get the raw materials right, both for the interior and the product, then you are close.



Krystian Kowalski

As a hands-on designer my work process combines full-scale models and prototypes with technology research and advanced cad modeling. This methodical approach is focused on revealing the essence of each design. I believe experiencing the product is the only way to develop valuable furniture.



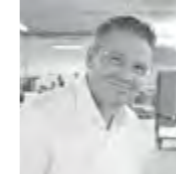
Javier Cuñado

In a smart working environment, each team member should be supported to improve their efficiency.



Yonoh Studio

Moved by sensations and intuition, Yonoh stays away from trends in order to stay true to its own voice: the one that keeps creative independence and honesty as its core values.



Andreas Krob

A good office chair should be intuitive in how it's used.



Dymitr Malcew

I'm inspired by things that happen on the periphery and at the intersection of disciplines, cultures and experiences. Regardless of the scale, form or style of the product, designing "experiences" is always the priority. Frame, material and detail is a form of communication with the user.

Certificates



