

The background of the slide is a light gray color with a pattern of technical drawings and gears. The drawings include various circular components, gears of different sizes, and lines with arrows indicating dimensions and movement. The gears are rendered in a simple, line-art style. The technical drawings are more detailed, showing concentric circles, radial lines, and various annotations.

GEARTEC.CZ

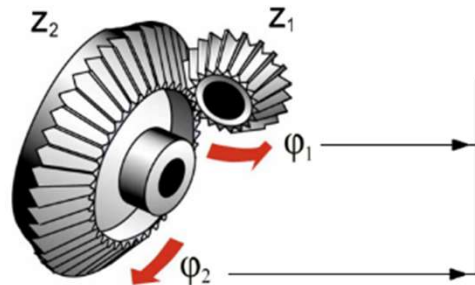
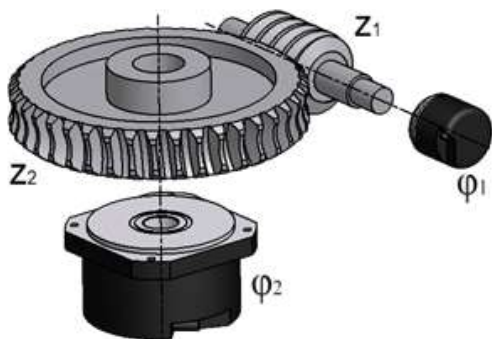
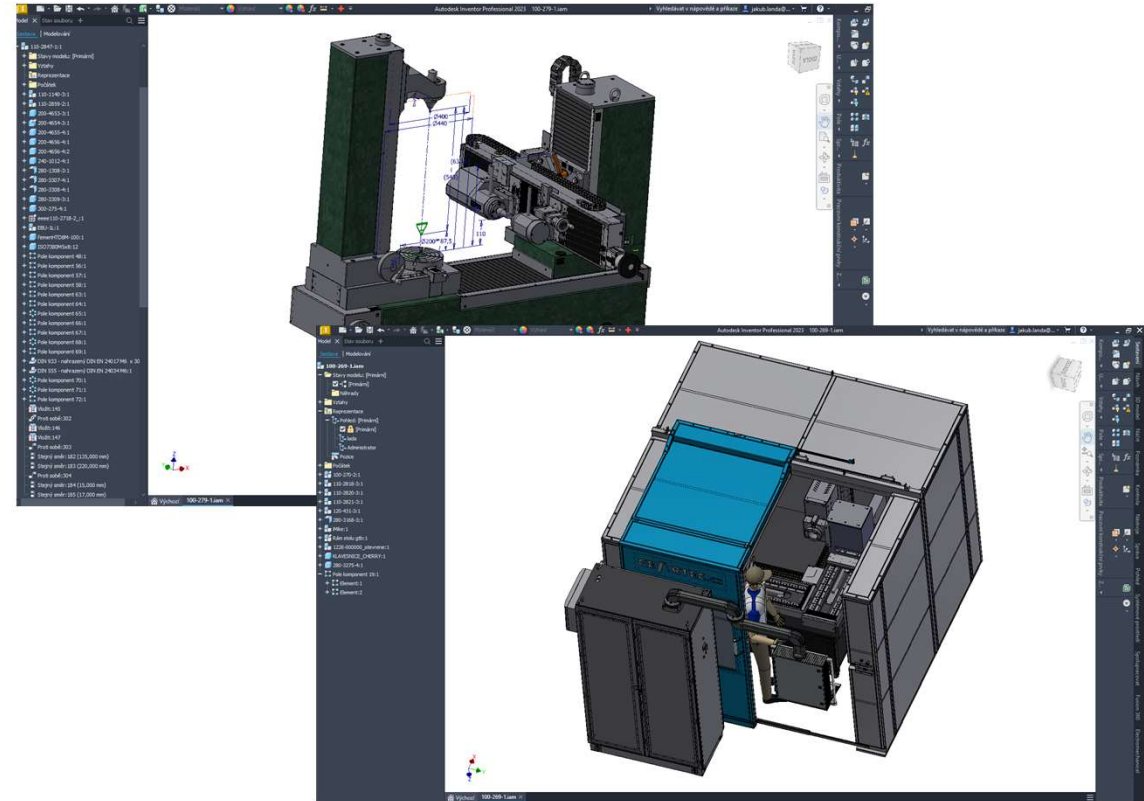
COMPANY PROFILE

gearing up for your visions

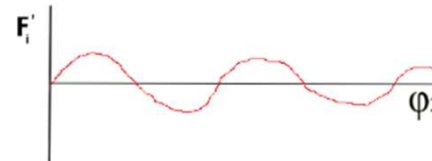
GEARTEC.CZ · STROJAŘSKÁ 2027 · 25088 ČELÁKOVICE · CZECH REPUBLIC · info@gartec.cz

OUR KNOW-HOW

- Machine development
- Electronic development
- Mathematical theory of gear's measurement
- Software development
- Machine assembling
- Service, machine calibration



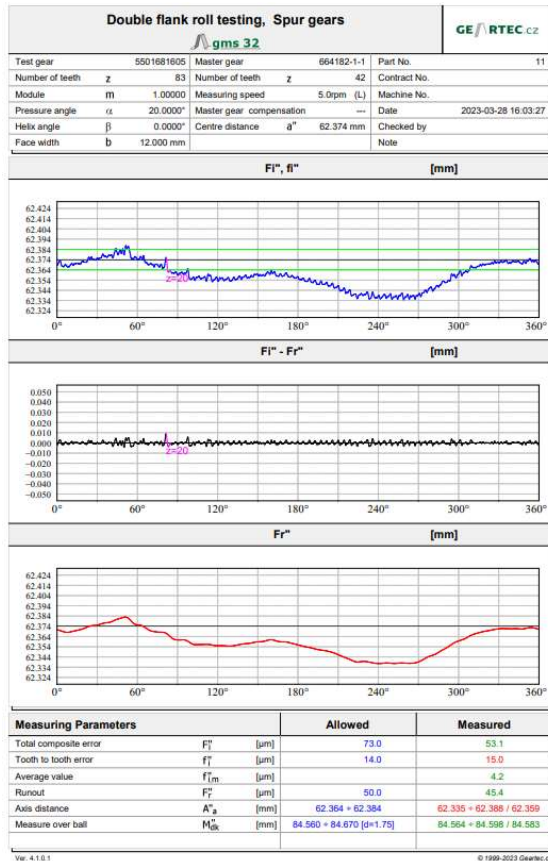
$$F'_i = \varphi_1 \cdot \frac{Z_1}{Z_2} - \varphi_2$$



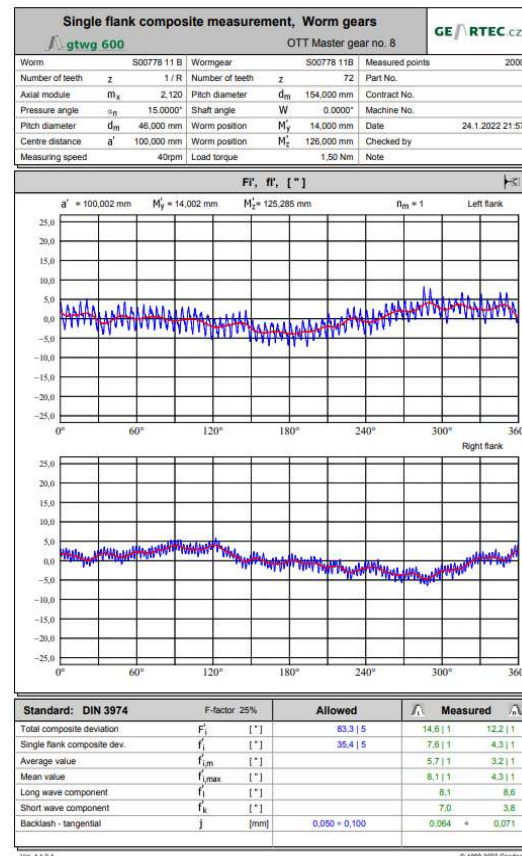
WAY OF MEASURING

EXAMPLES

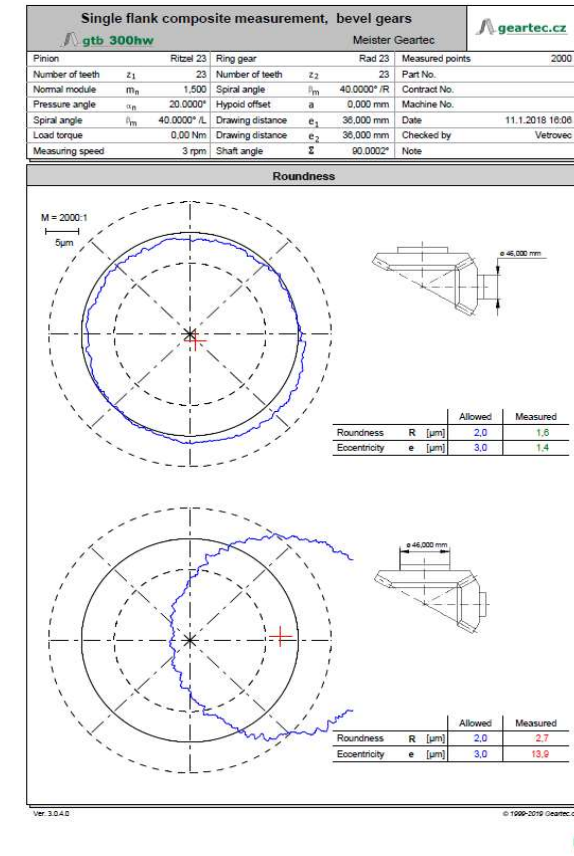
Double flank measuring



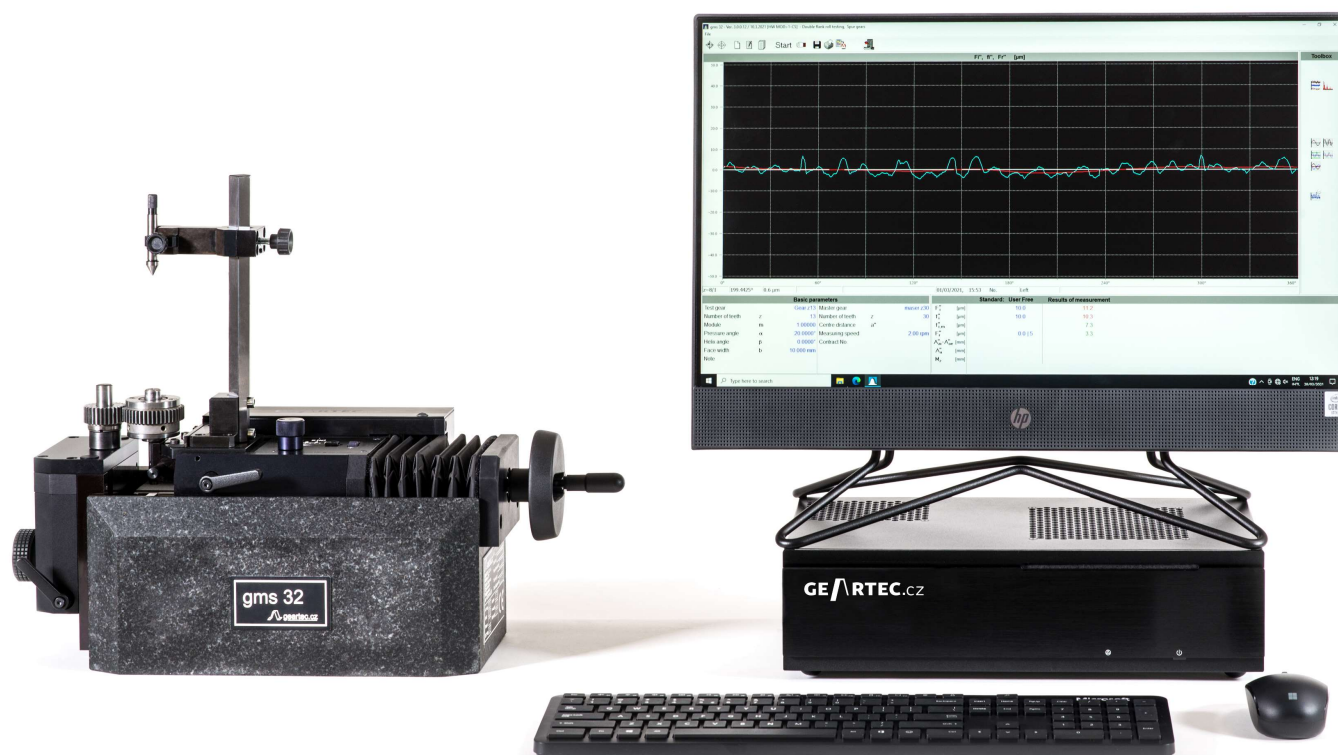
Single flank measuring



Run-out module



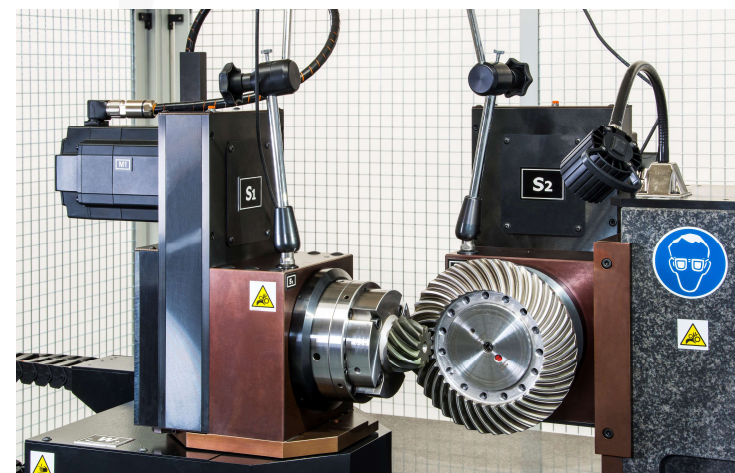
DOUBLE FLANK INSPECTION OF SPUR & HELICAL GEARS



GEARTEC.cz

GEARTEC.CZ · STROJAŘSKÁ 2027 · 25088 ČELÁKOVICE · CZECH REPUBLIC · info@gartec.cz

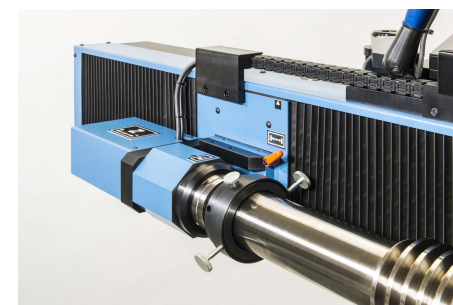
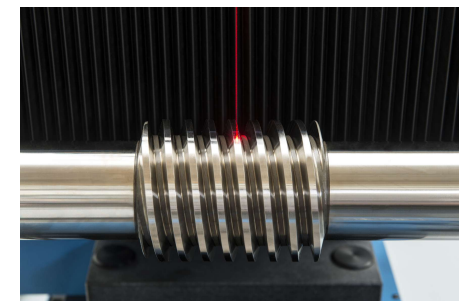
SINGLE FLANK INSPECTION OF BEVEL & SPUR GEARS



GEARTEC.cz

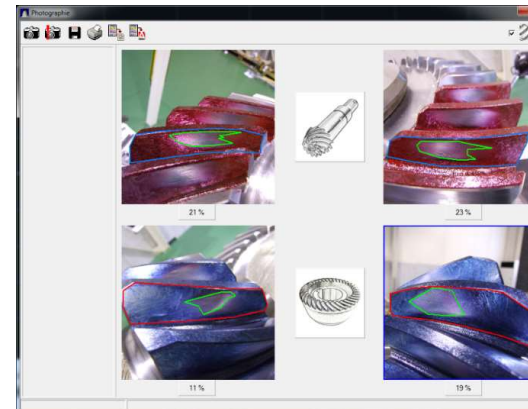
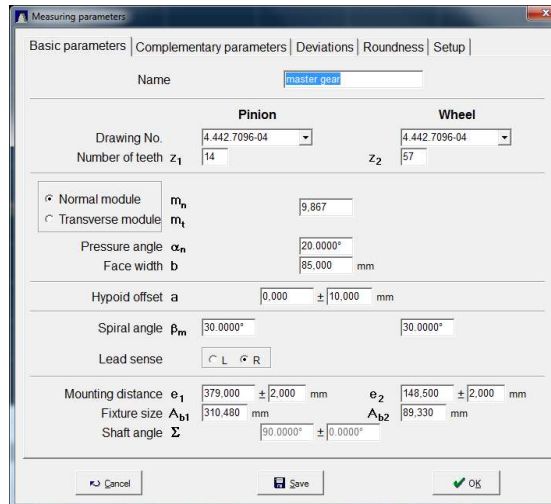
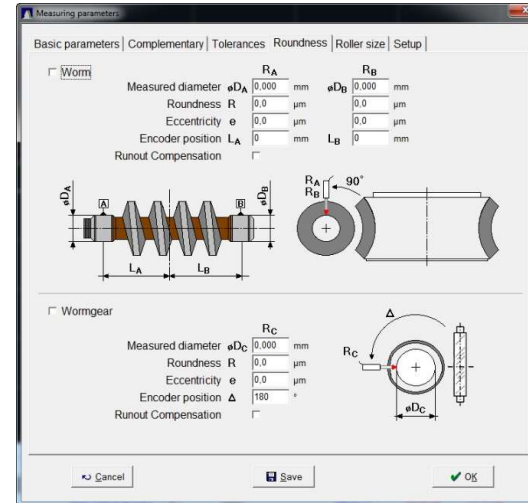
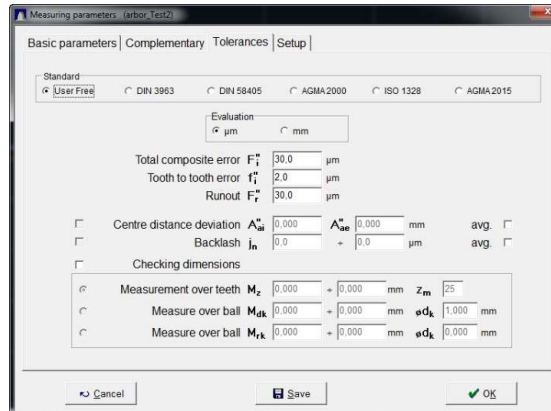
GEARTEC.CZ · STROJAŘSKÁ 2027 · 25088 ČELÁKOVICE · CZECH REPUBLIC · info@gartec.cz

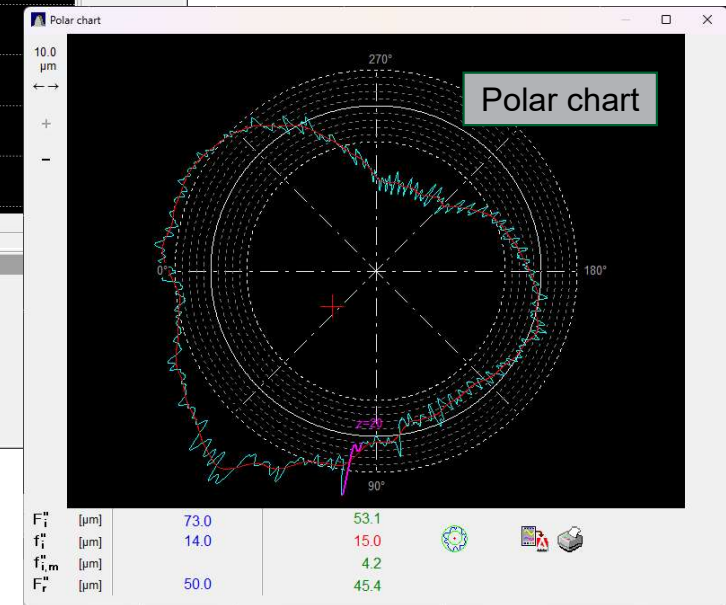
SINGLE OR DOUBLE FLANK INSPECTION OF WORM GEARS

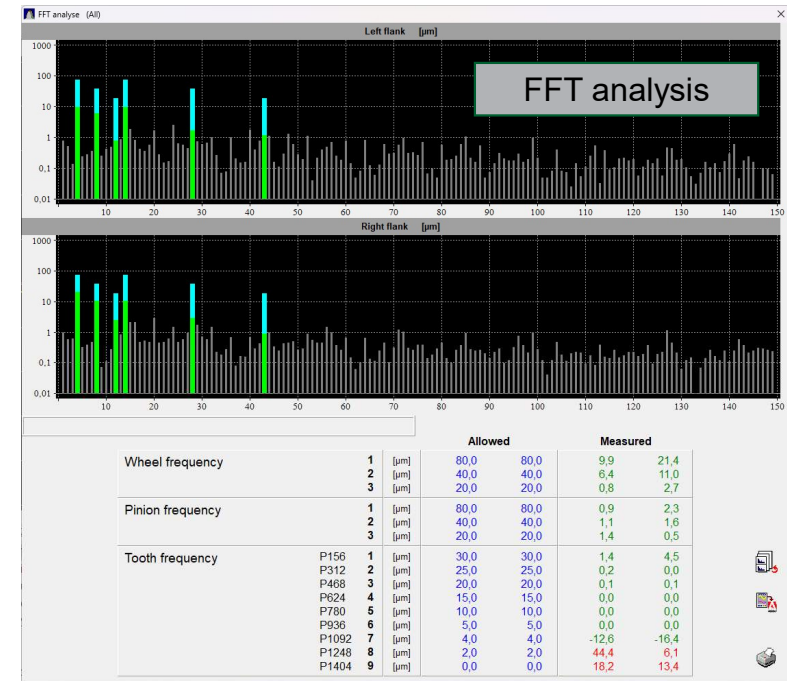
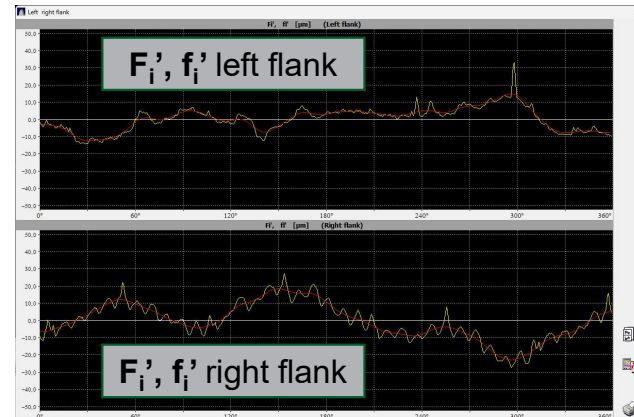
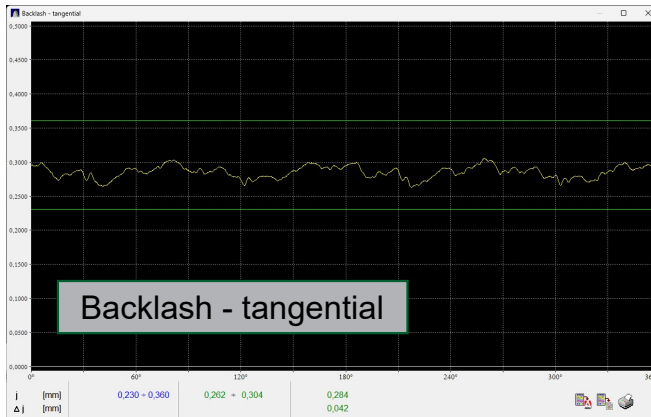
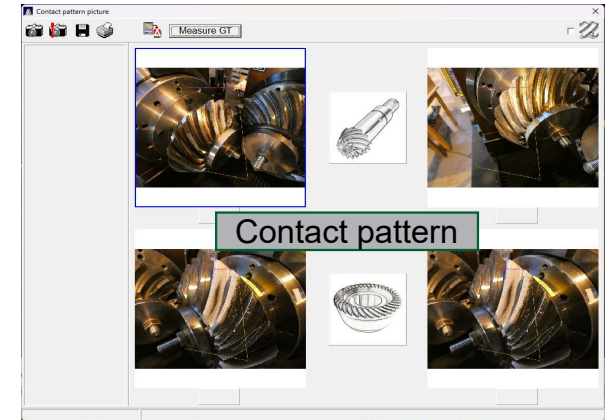


GEARTEC.cz

SOFTWARE – USER FRIENDLY INTERFACE







The background features a complex technical drawing of a gear assembly, including various gears, shafts, and circular components. The drawing is rendered in a light gray color, with some parts highlighted in a darker shade. The overall aesthetic is industrial and precise.

GEARTEC.CZ

CONTACT US AT ANY TIME

GEARTEC.CZ · STROJAŘSKÁ 2027 · 25088 ČELÁKOVICE · CZECH REPUBLIC · info@gartec.cz