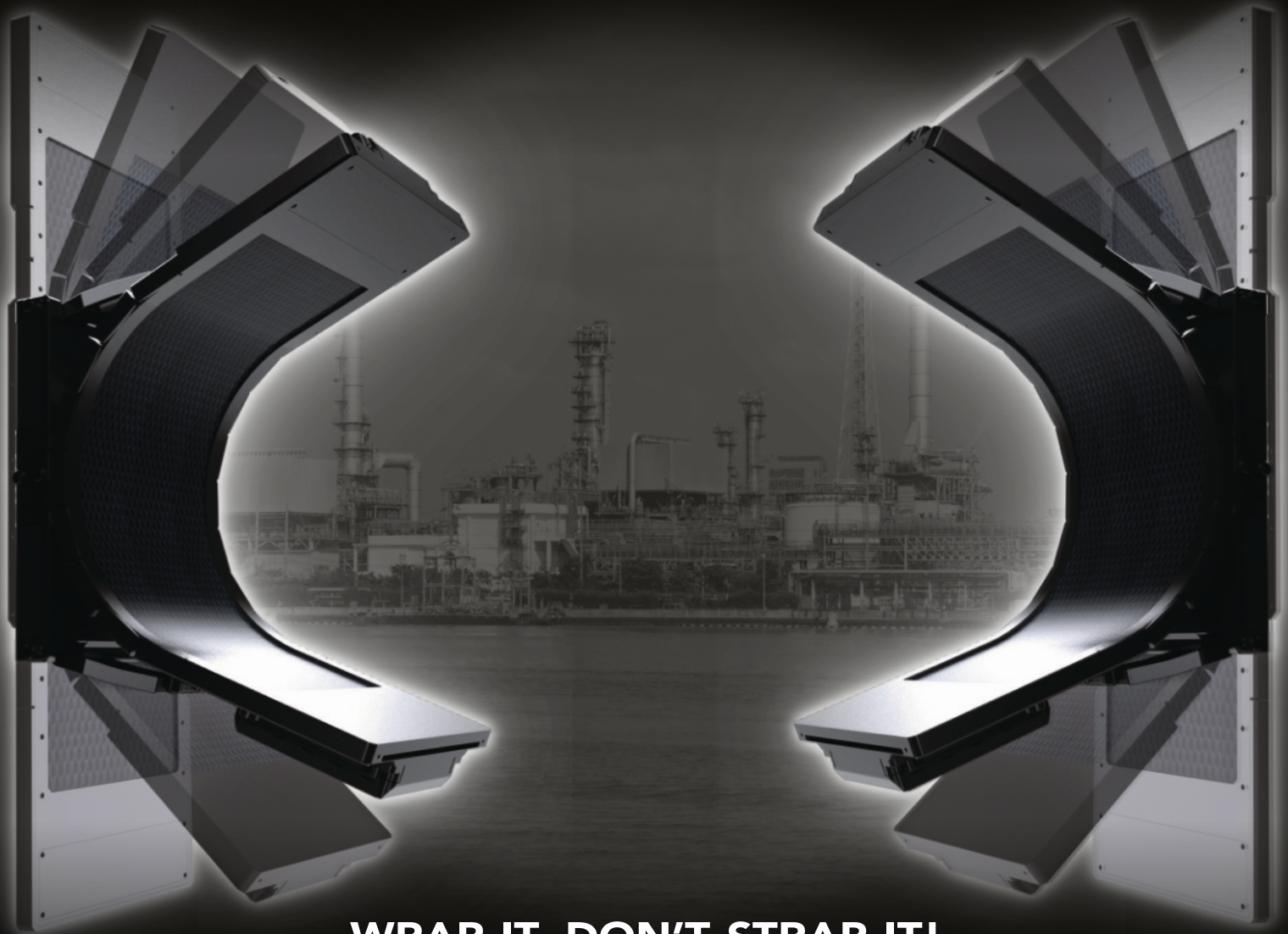


# Xpress Flex<sup>®</sup> DR Panel

*The World's First Flexible Digital X-Ray Detector*



## WRAP IT, DON'T STRAP IT!

Xpress Flex DR Panel is changing the NDT market by offering the first flexible DR panel that can be wrapped around an object for optimal contact across the area of interest. The Xpress Flex will change your Digital Imaging experience by improving workflow and image quality, reducing your exclusion zone, and simplifying the process with less consumables than other methods.



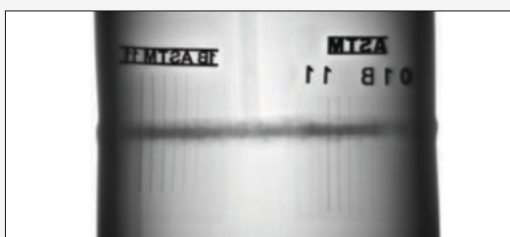
# The bendable panels are fully compatible with XVu software platform

**XVu Software** is used in conjunction with the Xpress Flex system. XVu allows for exposure control, image processing and archiving. X-Ray images are stored in DICONDE tamper-proof data format that meets or exceeds requirements of ISO, ASTM, API and ASME.

The software provides stitching of images, compatibility with conventional image formats such as .jpg and .tiff, with image enhancement, as well as image specific information such as inspection date and time all stored in the datafile. All of this provides the perfect conditions for image examination and inspection protocol preparation.



Flat panel



Flex series

## XpressFlex Bendable DR Panels

### Mechanical characteristics



### Specifications

	XpressFlex 1024B	XpressFlex 1036B/BW	XpressFlex 1043
Panel Size	10 x 24 cm	10 x 36 cm	10 x 43 cm
Pixel Pitch [µm]	100 µm	140 µm	100 µm
IP Rating	IP67		
ISO Rating	Class B Sensitivity		
Data Interface	Gigabit Ethernet WiFi (802.11n/ac)		
Panel Technology	A-Si TFT with Photodiode		
A/D Conversion	16-bit		

