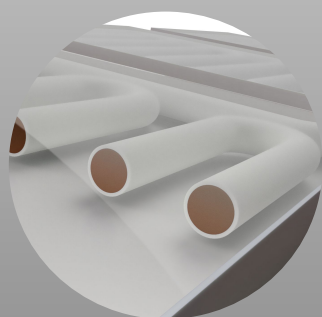
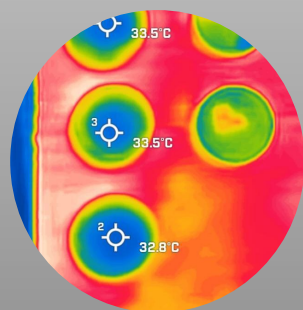




# Kuuler

Harnessing Space's Coldness for Earth's Comfort  
with Kuuler's Innovative Radiative Gap Technology.



[www.kuuler.pl](http://www.kuuler.pl)



# 01. PROBLEM



Temperature increase by **1.5 °C** through the last **100 years**



By **2050**, about **25 %** of global warming will be caused by **air conditioning**

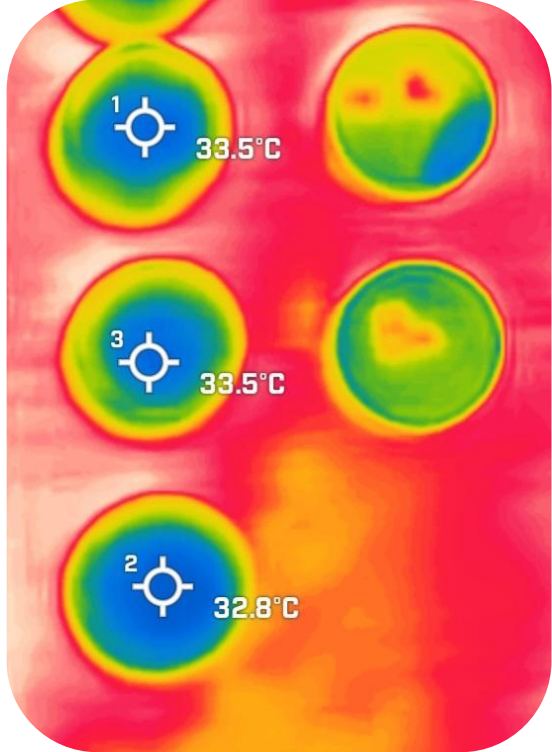
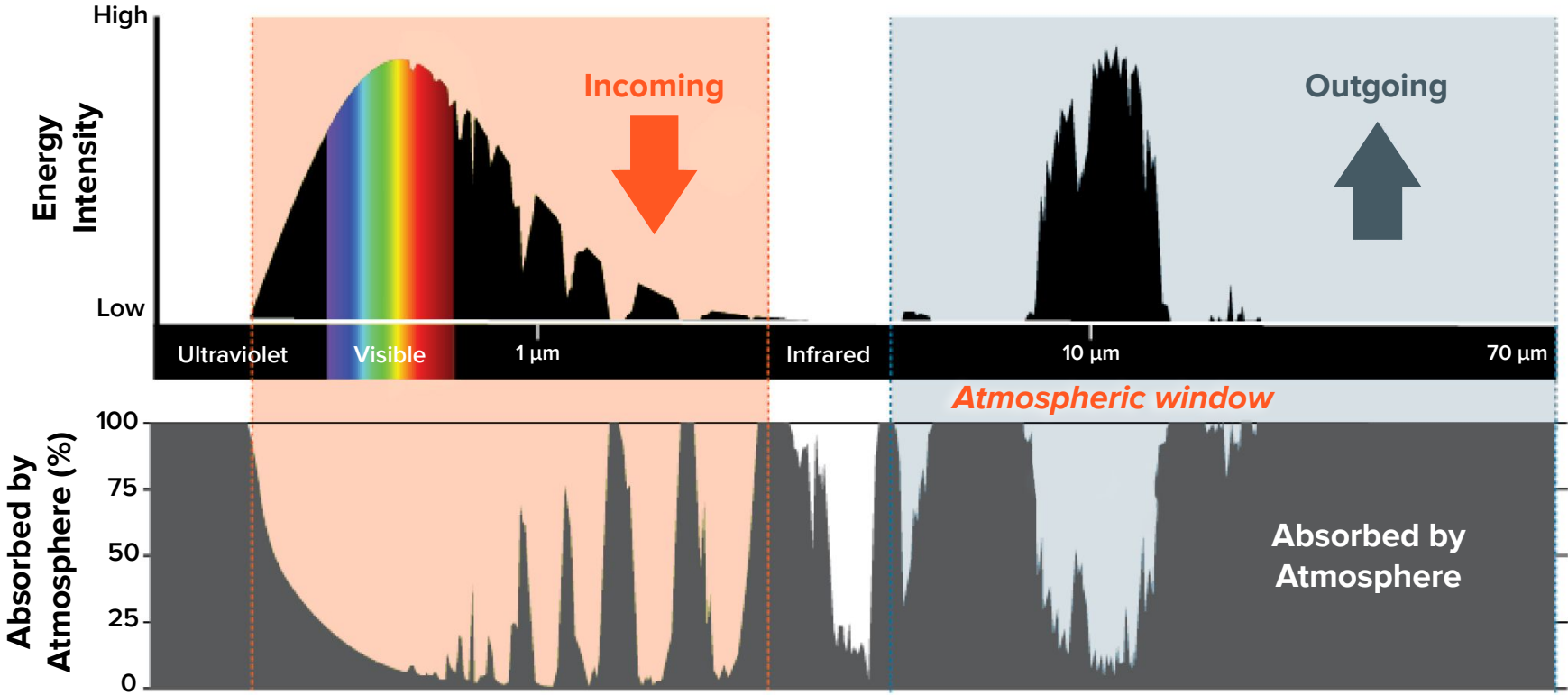


By **2050**, the demand for air conditioners will increase by **400%**, and their efficiency by **only 70%**.



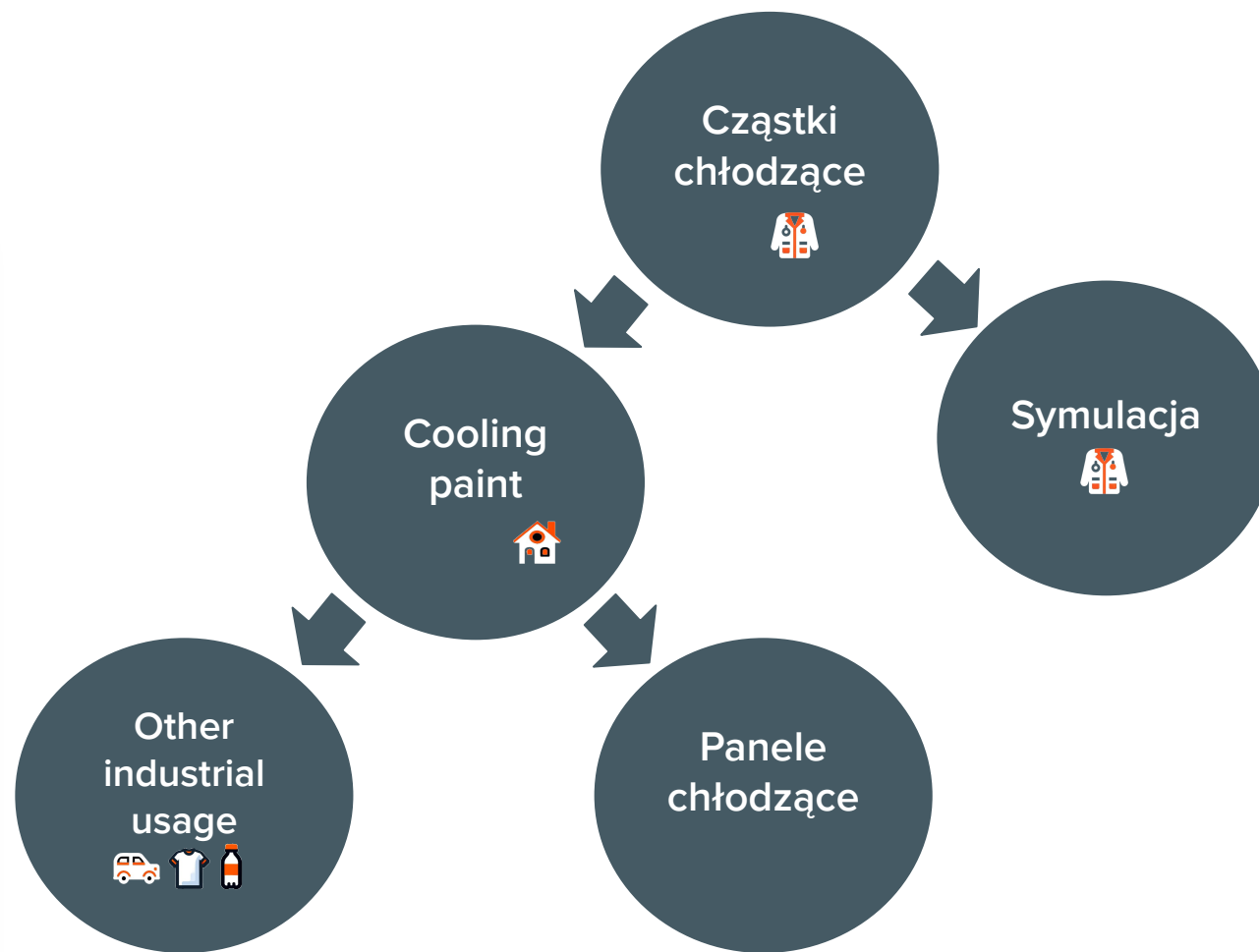
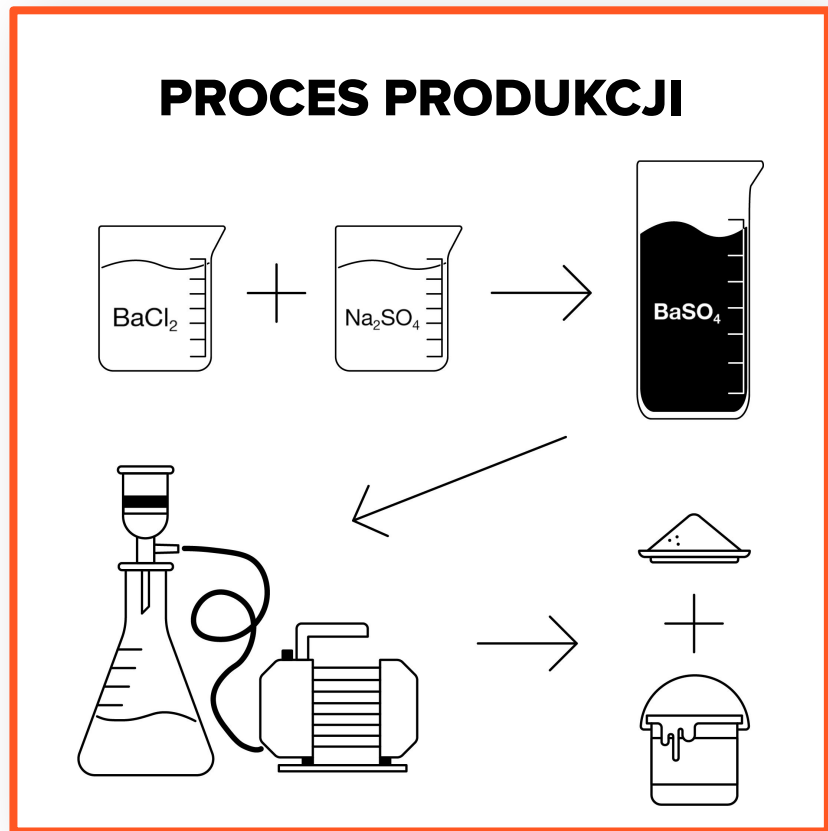
**20%** of total **electricity consumption**

# 02. OUR SOLUTION



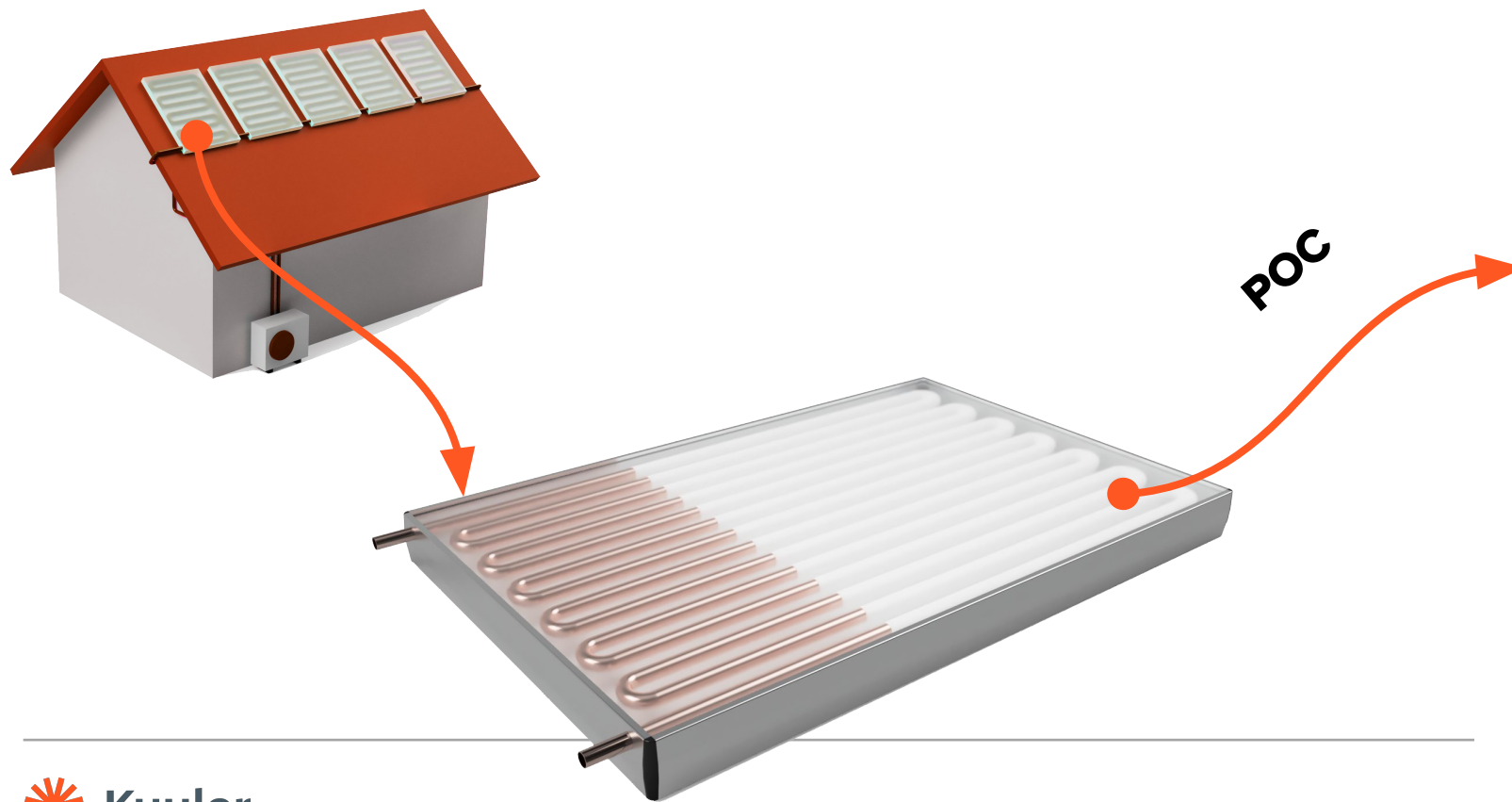


# 03. PRODUCT



# 04. USE SCENARIO

**PRODUKT: PANELE CHŁODZĄCE**



**POC**



# 05. USE SCENARIO: WAREHOUSE

**Product: Cooling panels**



Proper arrangement of panels at an angle will allow for the simultaneous use of cooling panels and photovoltaics.

Savings are primarily noticeable during the summer season.



# 06. USE SCENARIO: STORE

**Product: Cooling panels**



Assisting cooling during off-grid operation, for example during power outages.

Shaded space with roofs covered in cooling paint will avoid the noticeable effect on hot asphalt parking lots

# 07. USE SCENARIO: REFRIGERATED TRUCK

## Product: Cooling paint



65–86% of emissions related to cooling units are generated by powering the system itself and increasing the vehicle's mass due to the cooling system.

15% of energy generated from fossil fuels is consumed for cooling food transportation

The energy used for cooling is counted towards the total CO<sub>2</sub> emissions from transportation



# 05. RYNEK

**TAM**

**100 mld \$**  
światowy rynek  
chłodzenia

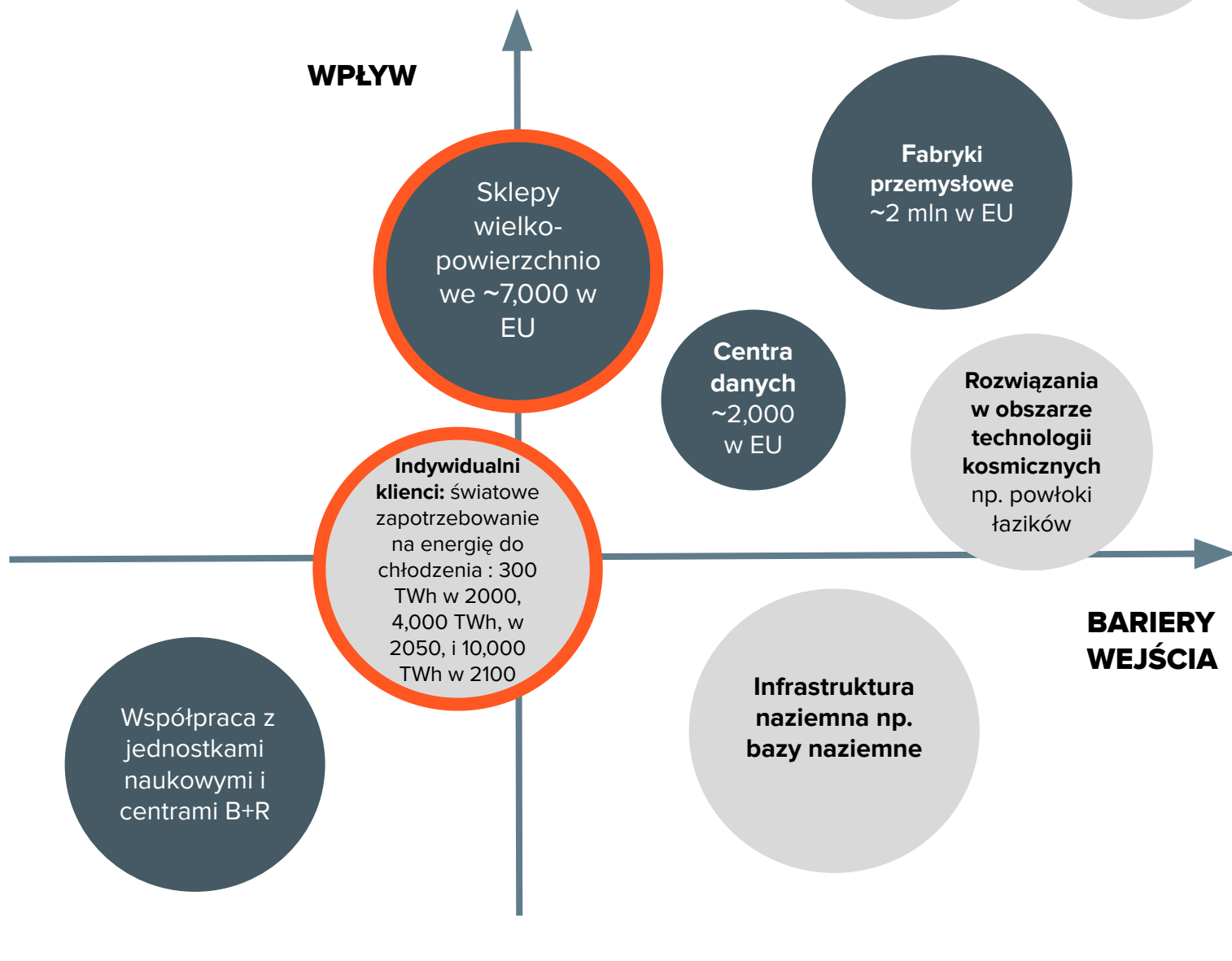
**SAM**

**10 mld \$** rynek  
przemysłowych  
systemów chłodzących  
(Europa, USA i Azja)






**SOM**

**50 mln \$** 0,5% rynku

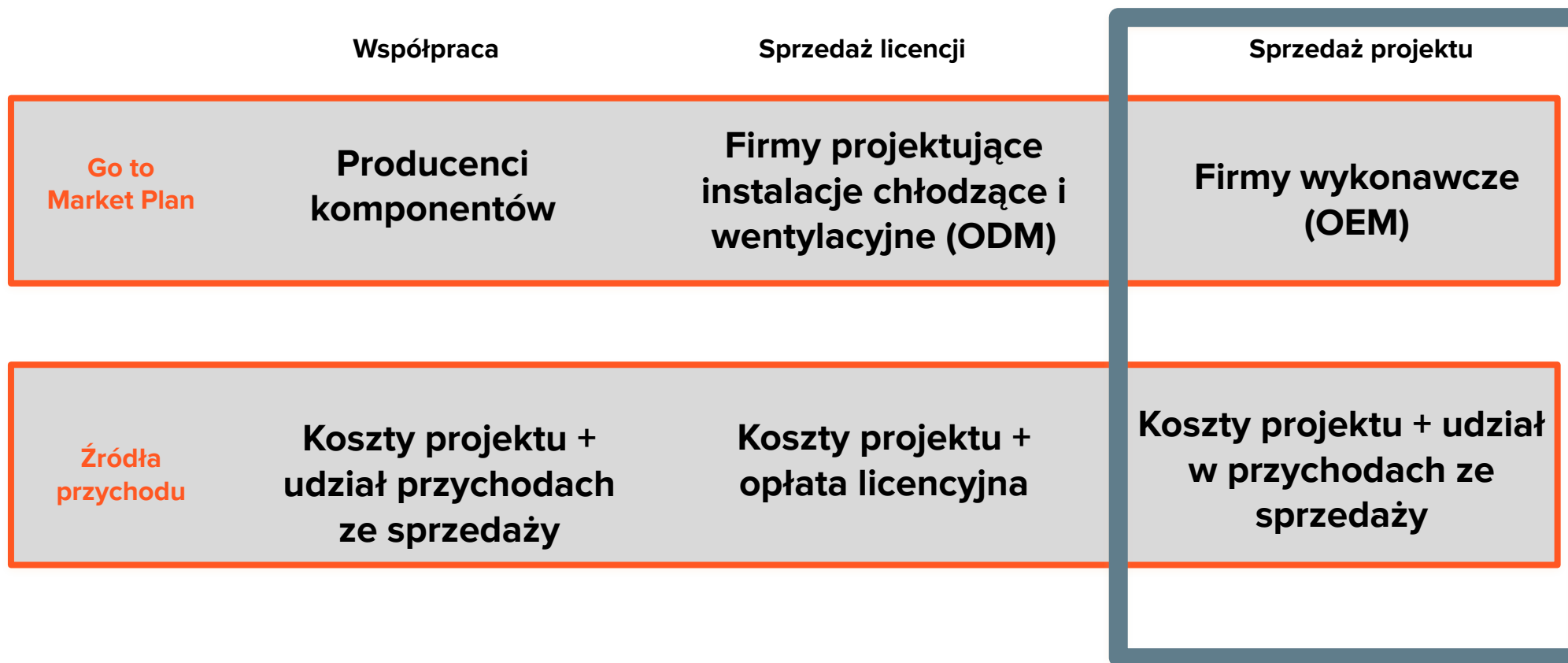
WPLÝW



# 06. KONKURENCJA

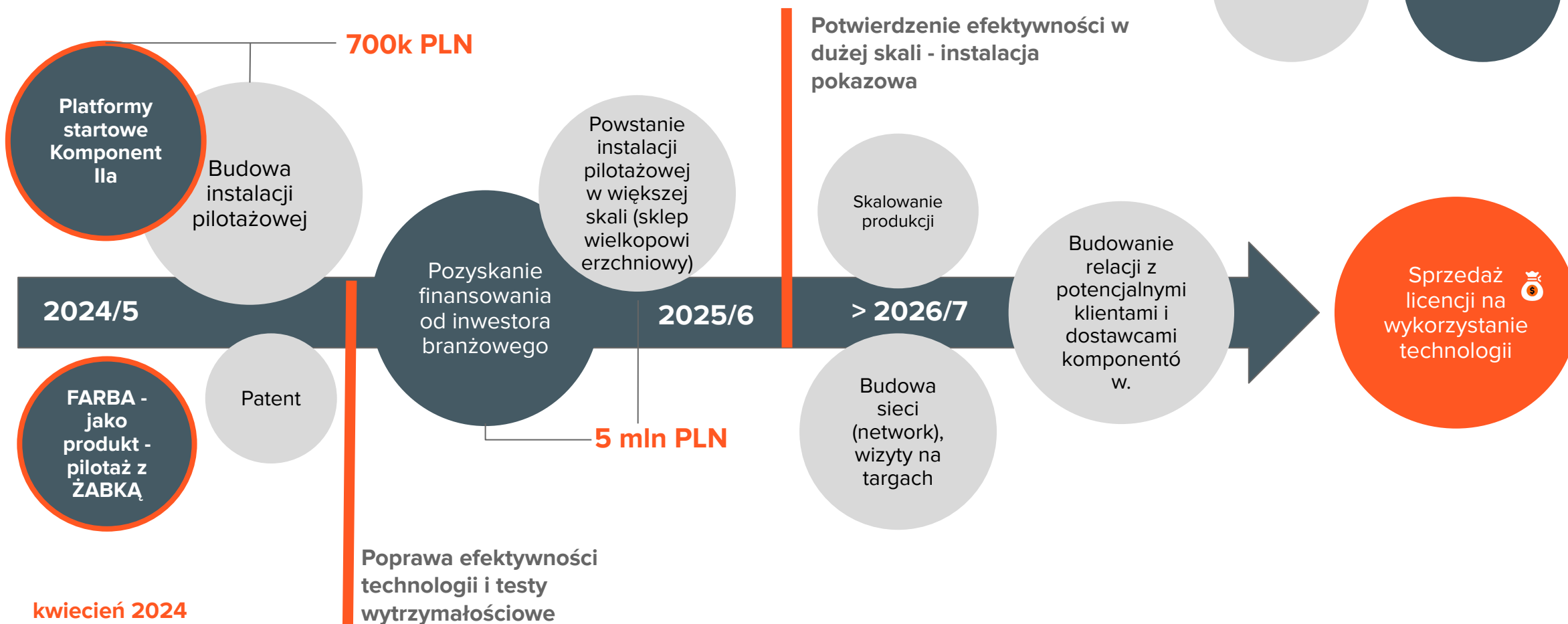
Company	 Kuuler	 SkyCool Systems	 AZ TECHNOLOGY	 PPG	 iCOOL 創冷科技
Panele	✓	✓	✗	✗	✗
Farby/inne powłoki	✓	✗	✓	✓	✓
Ambicje kosmiczne	✓	✗	✓	✗	✗
Dostępność w Europie	✓	✗	✓	✓	✗
Wiarygodność danych	✓	✓	✓	✗	✗
POC instalacje	✓	✓	✗	✗	✗
Opcja grzania 🧪	✓	✗	✗	✗	✗

# 07. MODEL BIZNESOWY





# 08. ŚCIEŻKA KOMERCJALIZACJI



kwiecień 2024

# 09. ZESPÓŁ



**Piotr Bomba - Koordynator prac B+R**



Naukowiec w Hitachi Energy



Developer w projektach B+R



UCL, Londyn



**Michał Kukulski - Projektant CAD**



Inżynier w projektach B+R



PM w AGH Racing



AGH, Kraków



**Agnieszka Biskup-Żbikowska – Project Manager**



EU R&D Funding Ekspert



Menedżer Inwestycyjny w funduszu VC



Kierownik Projektów IT



Uniwersytet Jagielloński Kraków



Obecnie jesteśmy w trakcie rekrutacji członków zespołu R&D:

- **fizyka**
- **chemika**

W kolejnych etapach konieczne będzie zatrudnienie:

- **inżyniera materiałowego**
- **inżyniera produkcji**



# Kuuler

**Dziękujemy za uwagę**



[www.kuuler.pl](http://www.kuuler.pl)



[team@kuuler.pl](mailto:team@kuuler.pl)



+48 577 622 866

*copyright © Kuuler 2023*

