



 *form*[®]

PANELE DEKORACYJNE
DECORATIVE PANELS
DEKORATIVE PANEELE



proform®



PANELE DEKORACYJNE

PL: ModuloForm to szeroka gama możliwości i pełna swoboda wzorniczej kreacji pojedynczych elementów czy całych przestrzeni. Pokazujemy, że wzór nie jest cechą jednego elementu, lecz początkiem większej formy, że to wzór spaja pojedyncze elementy w niepowtarzalną całość.

Nasze panele to z jednej strony niezliczona ilość gotowych pomysłów zastosowań, z drugiej strony, tworzywo dla wszystkich kreatywnych, chętnie łamiących istniejące schematy czy wręcz przekraczających granice wyobraźni. Dzięki nam pojedynczy element przestał być płaski, a przestrzeń zyskała głębię. Dostępne w wersji pełnej i ażurowej, wykończenia: folia i lakier.

DECORATIVE PANELS

EN: ModuloForm presents a vast range of possibilities and choices of design creations for individual elements or whole surfaces. We prove that design is not a feature of just one element but a start of a larger form, and that it is the design that joins individual elements into one, unique whole.

Our panels are, on one hand, an unlimited source of ready ideas for various applications, and on the other hand, a resource for anybody interested in creativity, willing to break the mould and push the boundaries of their imagination. With us, a single element is no longer flat and surfaces acquire depth. Available in full and openwork versions, available finishing: foil and lacquer.

DEKORATIVE PANEELE

DE: Dekorplatten Moduloform sind eine breite Palette von Möglichkeiten und vollständiger Gestaltungsfreiheit zur Schaffung einzelner Elemente oder ganzer Räume. Wir zeigen, dass ein Muster nicht nur ein Merkmal eines Elements ist, sondern auch der Beginn einer größeren Form sein kann, wodurch dieses Muster einzelne Elemente in einem einzigartigen Ganzen zusammenhält.

Unsere Paneele sind ideal für die Realisierung Ihrer unzähligen Ideen und bieten Ihnen alle Gestaltungsmöglichkeiten. Diese Dekorplatten wurden für alle Kreativen entwickelt, um bestehende Schemen über die Grenzen ihrer Vorstellungskraft zu brechen. Dank uns ist jedes Element nicht mehr flach und der Raum gewinnt an Tiefe. Verfügbar in der offenen und vollen Version. Zur Verfügung stehen Ausführungen: Folie und Lack.



PL: surowy
DE: Roh
EN: raw



PL: grubość
DE: Stärke
EN: thickness



PL: wzór podstawowy mieszczący się w module 600/600 mm co oznacza, że kontynuacja wzoru występuje co 600/600 mm
DE: Grundmuster das in ein 600/600 mm Modul passt was bedeutet, dass das Muster jede 600/600 mm wiederholt wird.
EN: basic pattern contained in the 600/600 mm unit which means that the continuation of the patterns takes place every 600/600 mm



PL: folia UN,DC,DM,PT
DE: Folie UN,DC,DM,PT
EN: foil UN,DC,DM,PT



PL: głębokość frezowania
DE: Frästiefe
EN: milling depth



PL: czarny MDF + folia
DE: MDF schwarz + Folie
EN: black MDF + foil



PL: folia wysoki połysk
DE: Hochglanzfolie
EN: high gloss foil



PL: wzór podstawowy mieszczący się w module 1200/600 mm co oznacza, że kontynuacja wzoru występuje co 1200/600 mm
DE: Grundmuster das in ein 1200/600 mm Modul passt was bedeutet, dass das Muster jede 1200/600 mm wiederholt wird.
EN: basic pattern contained in the 1200/600 mm unit which means that the continuation of the patterns takes place every 1200/600 mm.



PL: lakier matowy
DE: Mattlack
EN: matt lacquer



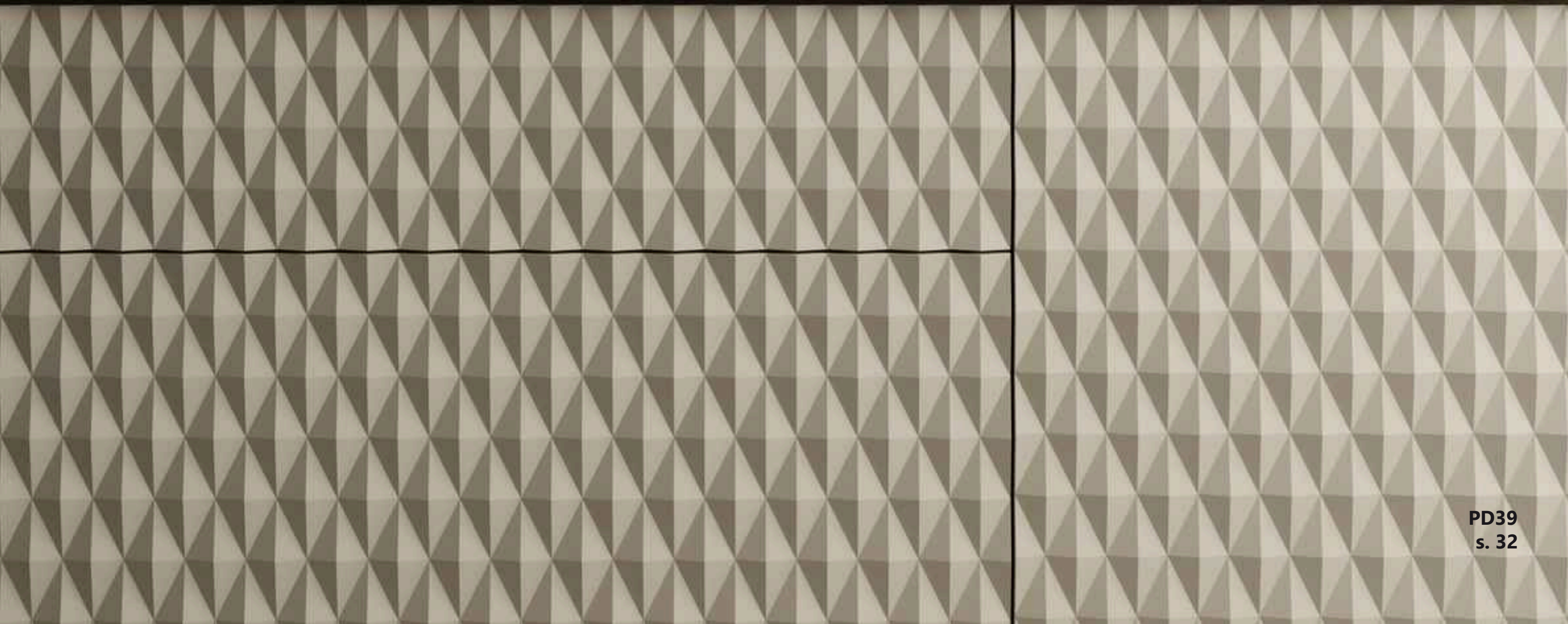
PL: Imi-beton
DE: Imi-beton
EN: Imi-beton



PL: dwustronny (19, 22 mm)
DE: Doppelseitig (19, 22 mm)
EN: double-sided (19, 22 mm)



PL: ALVIC
DE: ALVIC
EN: ALVIC





PD1
DOSTĘPNE WARIANTY



PD2
DOSTĘPNE WARIANTY



PD3
DOSTĘPNE WARIANTY



PD4
DOSTĘPNE WARIANTY



PD5
DOSTĘPNE WARIANTY



PD6



PD49 **NEW!**



PD50 **NEW!**



PD51 **NEW!**



PD52 **NEW!**



PD53 **NEW!**



PD7
DOSTĘPNE WARIANTY



PD8



PD9



PD10/1



PD11



PD12/1



PDA1



PDA1F



PDA2



PDA2F



PDA3



PDA3F



PD13



PD14



PD15



PD16



PD17



PD18



PDA4



PDA4F



PDA5



PDA5F



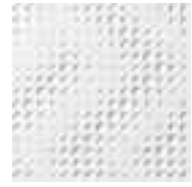
PDA6



PDA6F



PD19
DOSTĘPNE WARIANTY



PD20



PD21



PD22/1



PD23



PD24



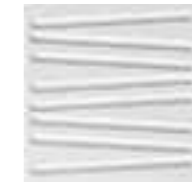
PDA7



PDA7F



PDA8



PDA8F



PDA9



PDA9F



PD25



PD26



PD27



PD28



PD29



PD30



PDA10



PDA10F



PDA11



PDA11F



PDA12



PDA12F



PD31



PD32



PD33



PD34 **NEW!**



PD35 **NEW!**



PD36 **NEW!**



PDA13



PDA13F



PDA14



PDA14F



PDA15



PDA15F



PD37 **NEW!**



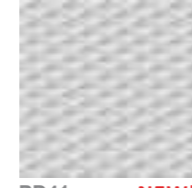
PD38 **NEW!**



PD39 **NEW!**



PD40 **NEW!**



PD41 **NEW!**



PD42 **NEW!**



PDA16



PDA16F



PDA17



PDA17F



PDA18



PDA18F



PD43 **NEW!**



PD44 **NEW!**



PD45 **NEW!**



PD46 **NEW!**



PD47 **NEW!**



PD48 **NEW!**



PDA19



PDA19F



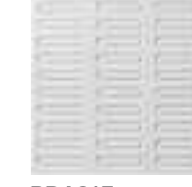
PDA20



PDA20F



PDA21



PDA21F



PDA22



PDA22F



PDA23



PDA23F



PDA24



PDA24F



PDA25



PDA25F



PDA26



PDA26F



PDA27



PDA27F



PDA28



PDA28F



PDA29



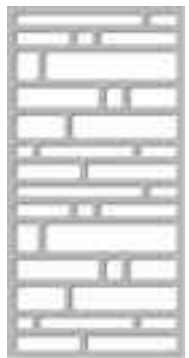
PDA29F



PDA30



PDA30F



XLA1 R



XLA2 R



XLA3 R



XLA4 R



XLA5 R



XLA6 R



XLA7 R



XLA8 R



XLA9 R



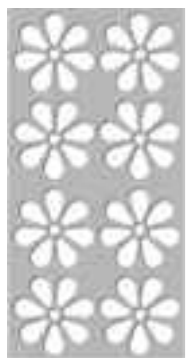
XLA10 R



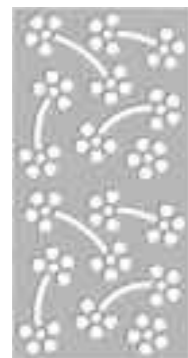
XLA11 R



XLA12 R



XLA13 R



XLA14 R



XLA15 R



XLA16 R



XLA17 R



XLA18 R



XLA19 R



XLA20 R



XLA21 R



XLA22 R



XLA23 R



XLA24 R



XLA25 R



XLA26 R



XLA27 R



XLA28 R



XLA29 R



XLA30 R



XLA31



XLA32



XLA33



XLA34



XLA35



XLA36



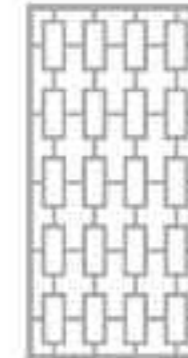
XLA37



XLA38



XLA39



XLA40



XLA41 **NEW!**



XLA42 **NEW!**

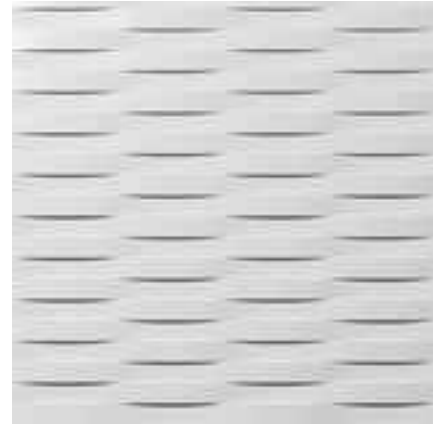


XLA43 **NEW!**



XLA44 **NEW!**

PD1/1



L1 (180 mm) L2 (300 mm) L4 (600 mm)



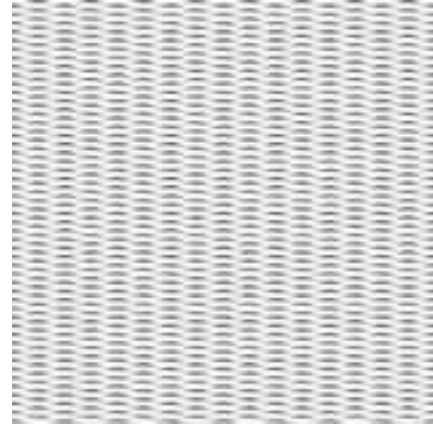
PD3



L1 (220 mm) L2 (370 mm) L4 (670 mm)



PD2



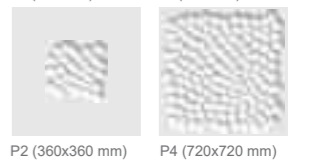
L1 (170 mm) L2 (320 mm) L4 (600 mm)



PD4



L1 (220 mm) L2 (380 mm) L4 (720 mm)



P2 (360x360 mm) P4 (720x720 mm)

PD5



L1 (210 mm) L2 (360 mm) L4 (600 mm)



PD7



L1 (210 mm) L2 (350 mm) L4 (600 mm)



PD6



L1 (160 mm) L2 (320 mm) L4 (600 mm)



PD8



L1 (190 mm) L2 (340 mm) L4 (640 mm)



P2 (340x340 mm) P4 (640x640 mm)

PD9



L1 (210 mm) L2 (360 mm) L4 (660 mm)



P2 (360x360 mm) P4 (660x660 mm)



UN 2065



PD11



L1 (160 mm) L2 (310 mm) L4 (610 mm)



P1/1 (160x160 mm) P1/2 (160x160 mm) P1/3 (310x160 mm)



P2 (310x310 mm) P4 (610x610 mm)



DM 2499



PD10/1



L4 (600 mm) P3 (350x950 mm)



UN 3500



PD12/1



L2 (350 mm) L4, P4 (600x600 mm)



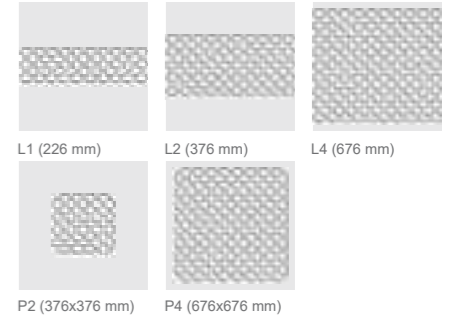
NCS S 1030



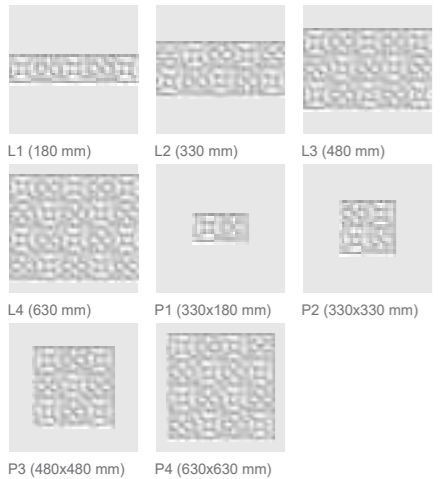
PD13



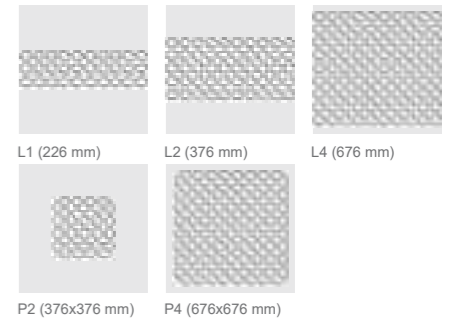
PD15



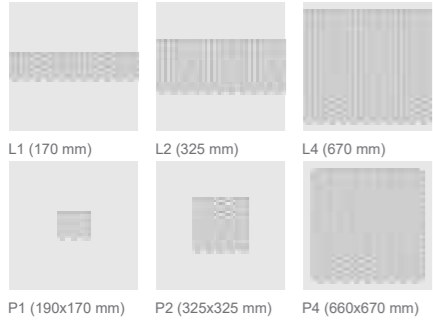
PD14



PD16



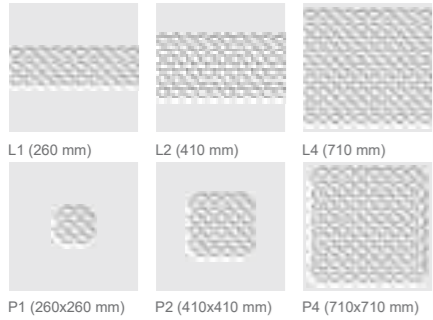
PD17



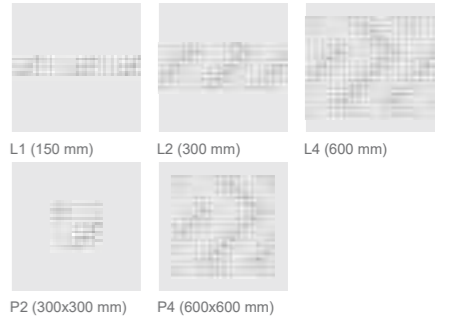
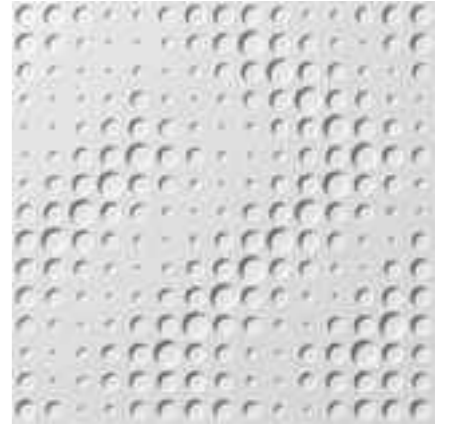
PD19/1



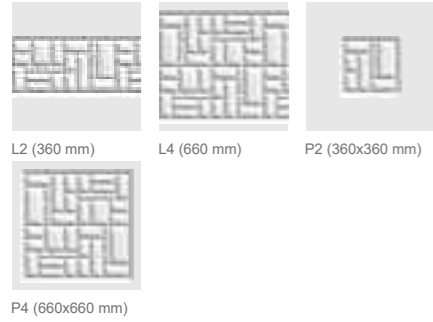
PD18



PD20



PD21



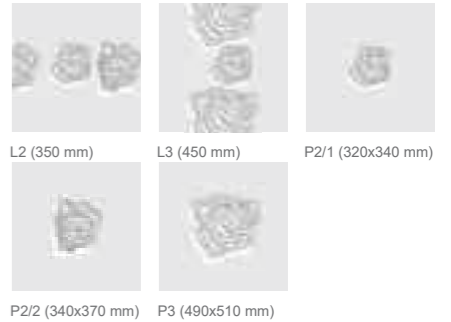
PD23



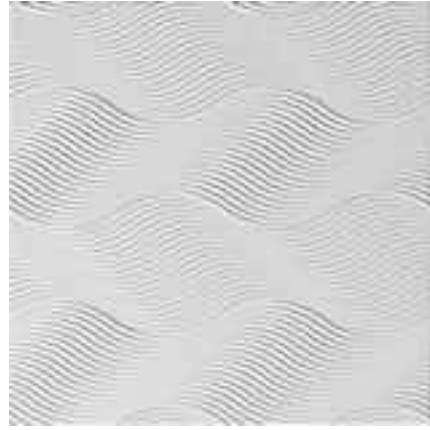
PD22/1



PD24



PD25



L1 (220 mm) L2 (370 mm) L4 (680 mm)



UN 4003



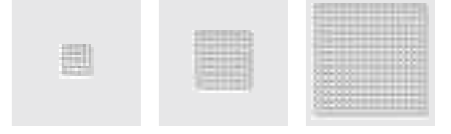
PD27



L1 (200 mm) L2 (360 mm) L4 (680 mm)



UN 5004



P1 (200x200 mm) P2 (360x360 mm) P4 (680x680 mm)

PD26



L2 (280 mm) L3 (420 mm)



P1/1 P1/2 P1/3 P1/4



P1/5 P1/6 P1/7 P1/8
P1/9 P1/10 P1 (180x210 mm)



PD28



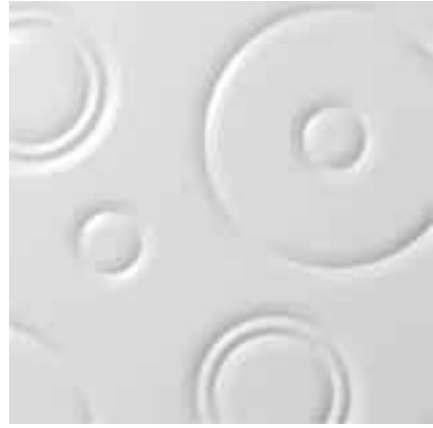
L1 (150 mm) L2 (320 mm) L4 (600 mm)



UN 3500



PD29



P1 (220x220 mm) P2 (310x310 mm)



UN 2065



PD31



L1 (163 mm) L2 (310 mm) L3 (457 mm)



NCS 3030



L4 (600 mm)

PD30



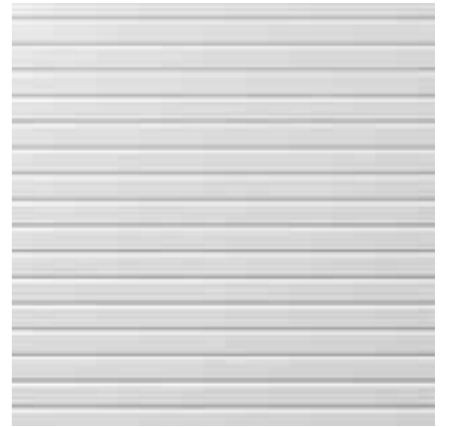
L3 (560 mm) P2 (380x410 mm)



PT 5001



PD32



L1 (150 mm) L2 (300 mm) L4 (600 mm)



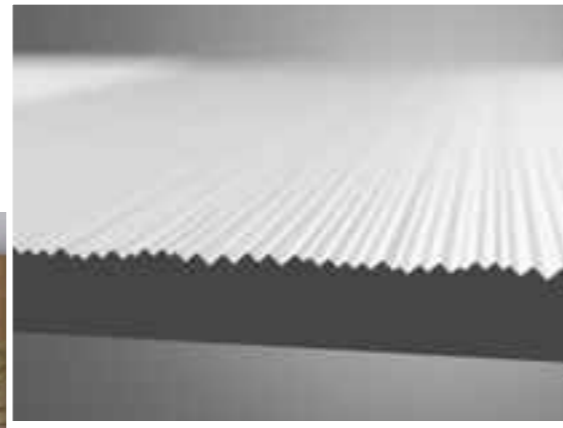
PT 5006



PD33



L1/1 (60 mm) L1/2 (120 mm) L2 (300 mm)



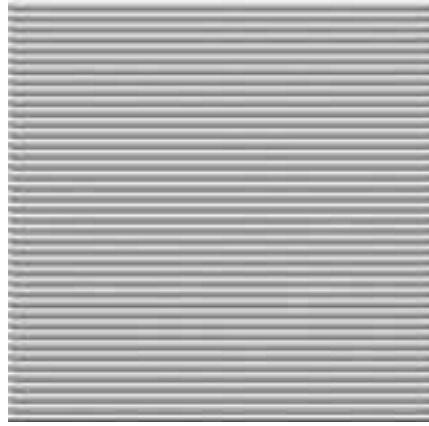
proform[®]

DESIGN QUALITY TECHNOLOGY

NOWE PANELE DEKORACYJNE PD
NEW PD DECORATIVE PANELS / NEUE PD DEKORATIVE PANEELE

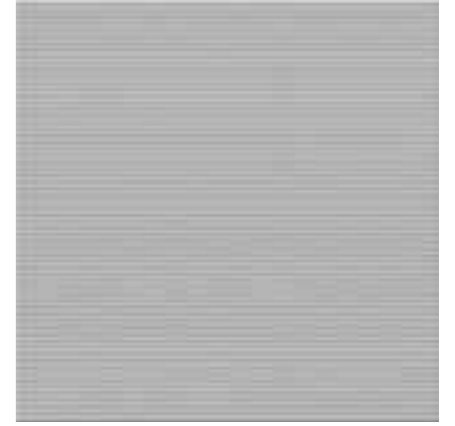
PD34

NEW!



NEW!

PD36



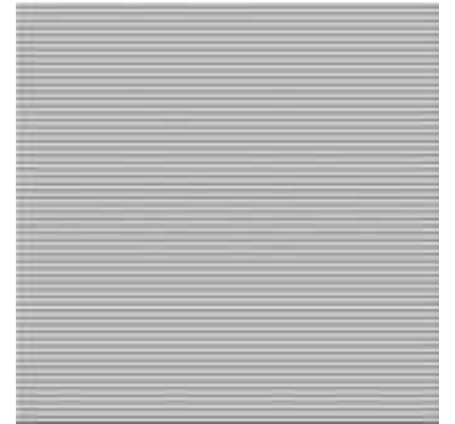
PD35

NEW!



NEW!

PD37



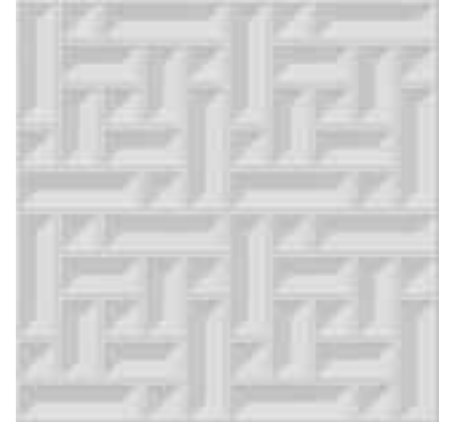
PD38

NEW!



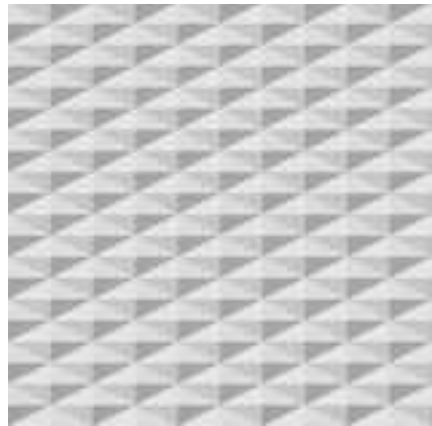
NEW!

PD40



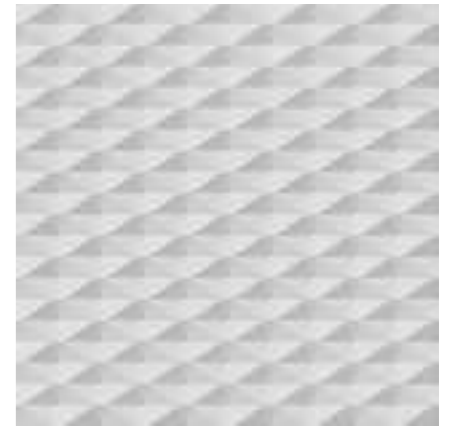
PD39

NEW!



NEW!

PD41



PD42

NEW!



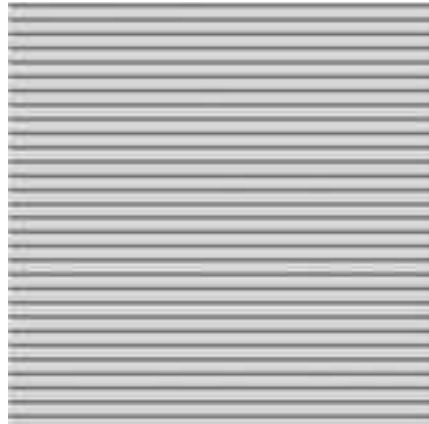
NEW!

PD44



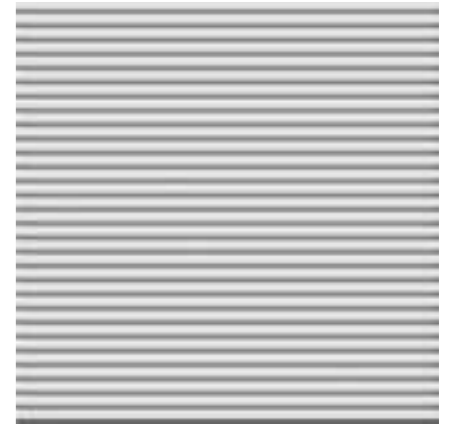
PD43

NEW!



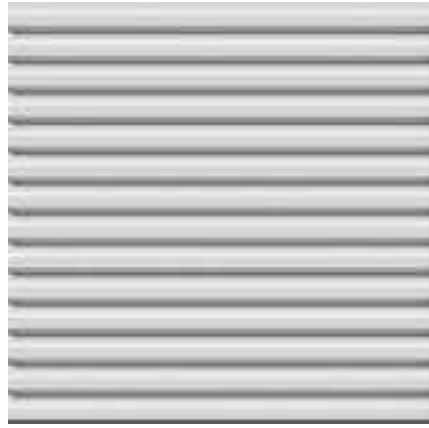
NEW!

PD45



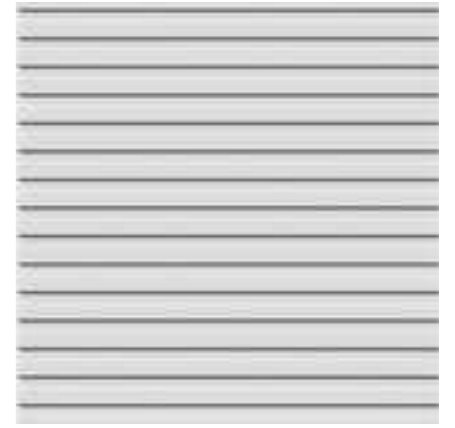
PD46

NEW!



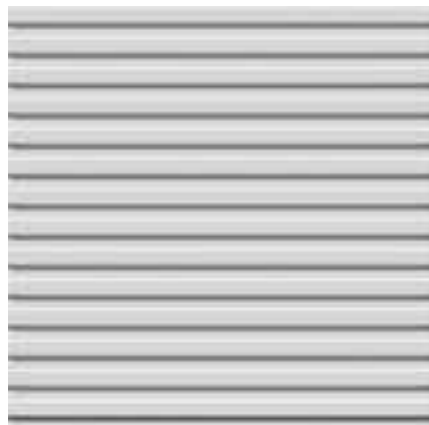
NEW!

PD48



PD47

NEW!



NEW!

PD49



PD50

NEW!



NEW!

PD52



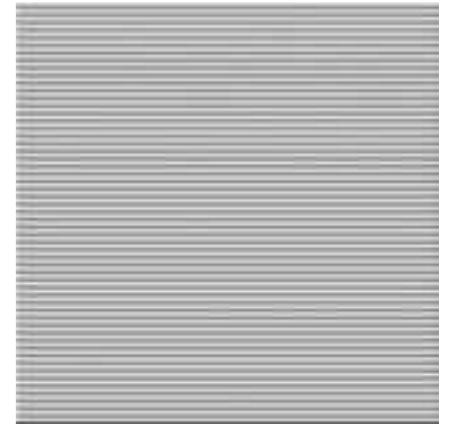
PD51

NEW!



NEW!

PD53





PANELE AŻUROWE
OPENWORK DECORATIVE PANELS / DURCHBROCHENE DEKORATIVE PANEELE

PDA24/FD8009

s. 65

PDA1



P2/1 (300x300 mm) P2/2 (600x155 mm) P3 (600x355 mm)



P4 (600x600 mm)



NCS S 5005



LAKIER
LACK
LACQER AA
19, 22 mm

PDA2



P2 (300x300 mm) P3 (290x600 mm) P4 (600x600 mm)



UN 2065



LAKIER
LACK
LACQER AA
19, 22 mm

PDA1F



P2/1F (300x300 mm) P2/2F (600x155 mm) P3F (600x355 mm)



P4F (600x600 mm)



UN 0116



PDA2F



P2F (300x300 mm) P3F (290x600 mm) P4F (600x600 mm)



UN 0111



PDA3



P2/1 (300x300 mm) P2/2 (133x600 mm) P3 (270x600 mm)



P4 (600x600 mm)

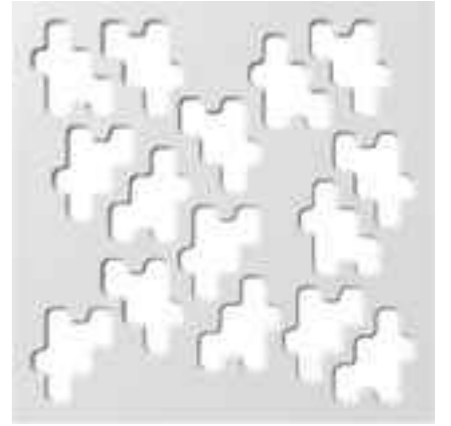


NCS S-0502-R



LAKIER
LACK
LACQER AA
19, 22 mm

PDA4



P1 (170x190 mm) P2/1 (246x300 mm) P2/2 (280x349 mm)



P3 (280x600 mm) P4 (600x600 mm)



UN 2065



LAKIER
LACK
LACQER AA
19, 22 mm

PDA3F



P2/1F (300x300 mm) P2/2F (133x600 mm) P3F (270x600 mm)



P4F (600x600 mm)



UN 0111



PDA4F



P1F (170x190 mm) P2/1F (246x300 mm) P2/2F (280x349 mm)



P3F (280x600 mm) P4F (600x600 mm)



PT 5001



PDA5



P2/1 (300x300 mm) P2/2 (100x600 mm) P3 (180x600 mm)



P4 (600x600 mm)



HG 0901



PDA6



P2/1 (300x300 mm) P2/2 (390x277 mm) P3/1 (600x390 mm)



P3/2 (600x288 mm) P3/3 (600x402 mm) P4 (600x600 mm)



UN 5003



PDA5F



P2/1F (300x300 mm) P2/2F (100x600 mm) P3F (180x600 mm)



P4F (600x600 mm)



HG 9700



PDA6F



P2/1F (300x300 mm) P2/2F (390x277 mm) P3/1F (600x390 mm)



P3/2F (600x288 mm) P3/3F (600x402 mm) P4F (600x600 mm)



PT 5001



PDA7



P2 (300x300 mm) P4 (600x600 mm)



NCS S 3020



RAL 9007



PDA8



P2/1 (300x300 mm) P2/2 (600x110 mm) P3 (600x252 mm)



P4 (600x600 mm)

PDA7F



P2F (300x300 mm) P4F (600x600 mm)



HG 0335



RAL 8016



PDA8F

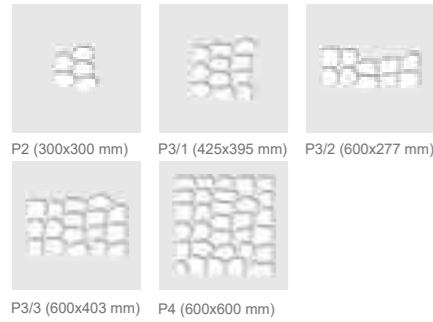


P2/1F (300x300 mm) P2/2F (600x110 mm) P3F (600x252 mm)

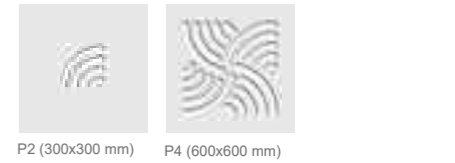


P4F (600x600 mm)

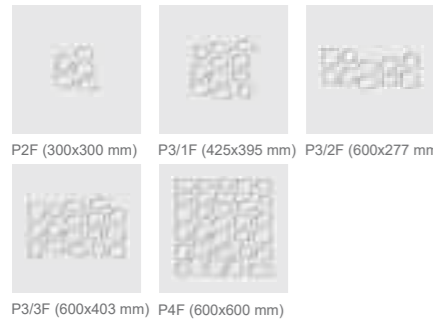
PDA9



PDA10



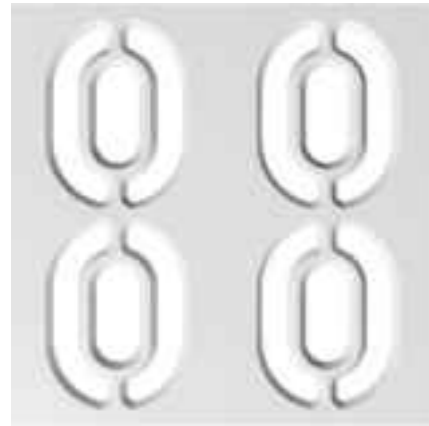
PDA9F



PDA10F



PDA11



P2 (300x315 mm) P3 (300x600 mm) P4 (600x600 mm)



RAL 5003



PDA12



P2/1 (260x260 mm) P2/2 (600x156 mm) P3/1 (378x378 mm)



HG 2800



P3/2 (600x378 mm) P4 (600x600 mm)

PDA11F



P2F (300x315 mm) P3F (300x600 mm) P4F (600x600 mm)



UN 1001



PDA12F

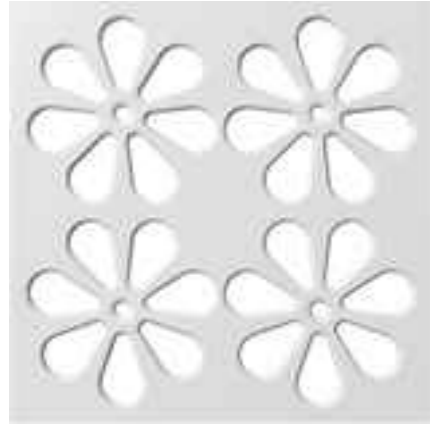


P2/1F (260x260 mm) P2/2F (600x156 mm) P3/1F (378x378 mm)



P3/2F (600x378 mm) P4F (600x600 mm)

PDA13



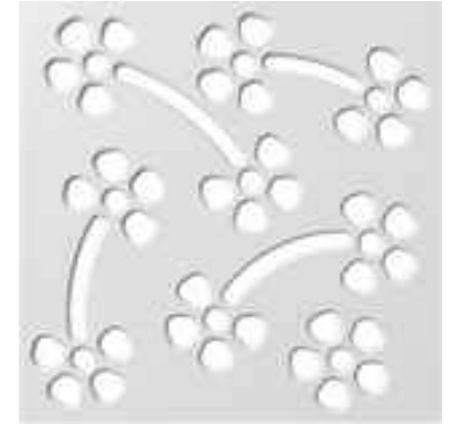
P2 (300x300 mm) P3 (300x600 mm) P4 (600x600 mm)



HG 7015



PDA14



P2 (300x300 mm) P4 (600x600 mm)



RAL 9003



PDA13F



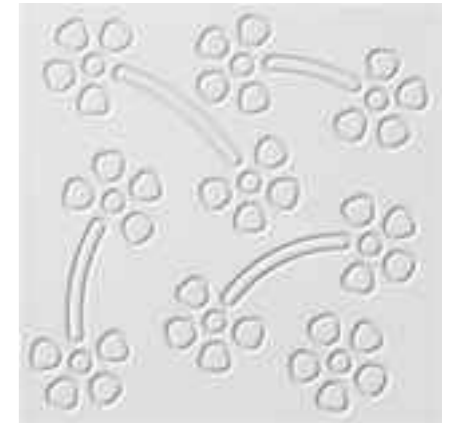
P2F (300x300 mm) P3F (300x600 mm) P4F (600x600 mm)



UN 0111



PDA14F



P2F (300x300 mm) P4F (600x600 mm)



PT 5001



PDA15



P2/1 (300x300 mm) P2/2 (600x185 mm) P3 (600x330 mm)

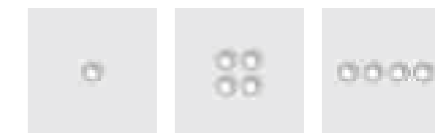


P4 (600x600 mm)



LAKIER
LACK
LACQER
AA
19, 22 mm

PDA16



P1 (160x160 mm) P2/1 (310x310 mm) P2/2 (600x160 mm)



P3 (600x310 mm) P4 (600x600 mm)



LAKIER
LACK
LACQER
AA
19, 22 mm

PDA15F



P2/1F (300x300 mm) P2/2F (600x185 mm) P3F (600x330 mm)



P4F (600x600 mm)



PT 5001

8mm
12,18,22 mm

PDA16F



P1F (160x160 mm) P2/1F (310x310 mm) P2/2F (600x160 mm)



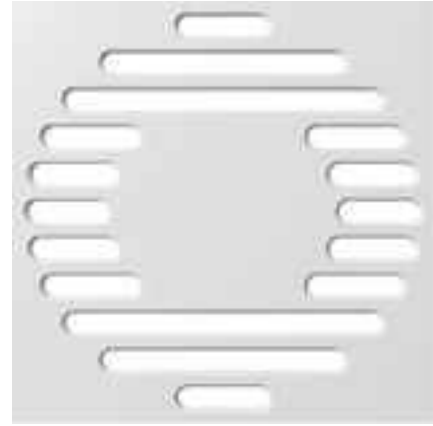
P3F (600x310 mm) P4F (600x600 mm)



UN 2065

5mm
10,12,18,22 mm

PDA17



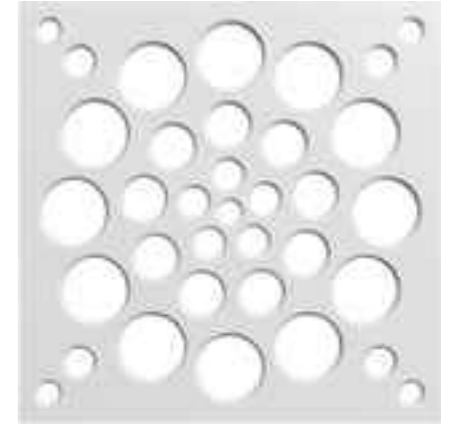
P2 (300x300 mm) P3 (600x280 mm) P4 (600x600 mm)



DM 2506



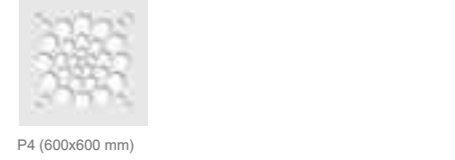
PDA18



P1 (180x180 mm) P2 (300x300 mm) P3 (360x360 mm)



UN 2065



P4 (600x600 mm)

PDA17F



P2F (300x300 mm) P3F (600x280 mm) P4F (600x600 mm)



UN 5003



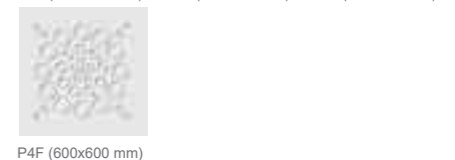
PDA18F



P1F (180x180 mm) P2F (300x300 mm) P3F (360x360 mm)

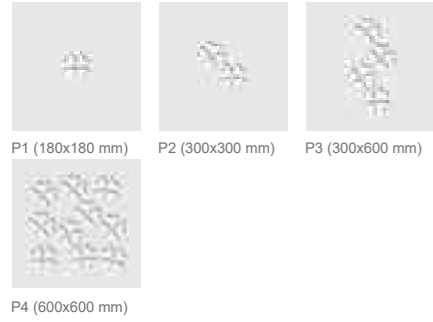


PT 5000

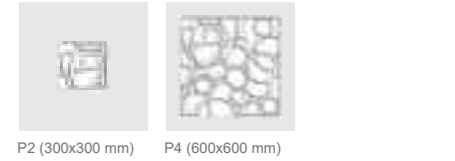
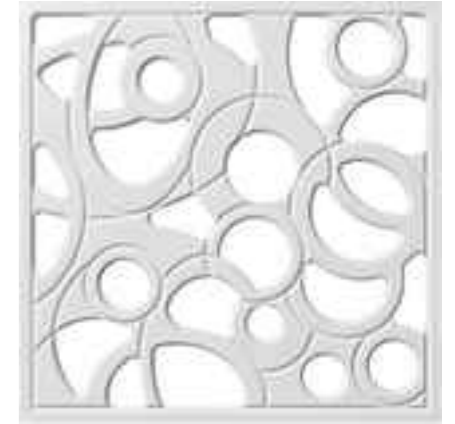


P4F (600x600 mm)

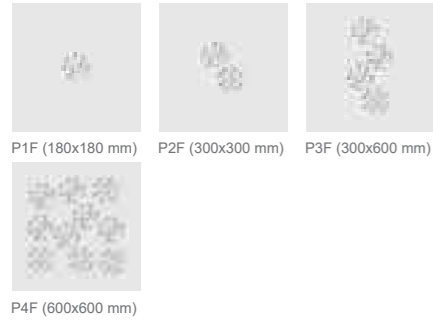
PDA19



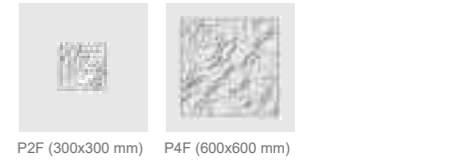
PDA20



PDA19F



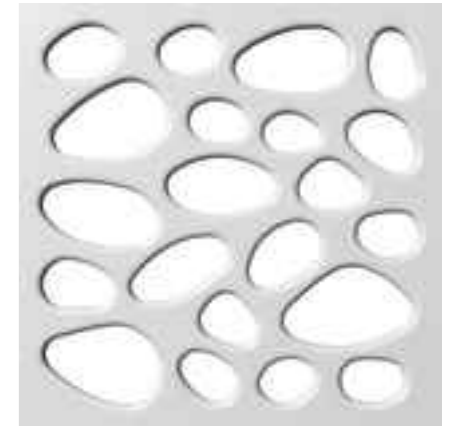
PDA20F



PDA21



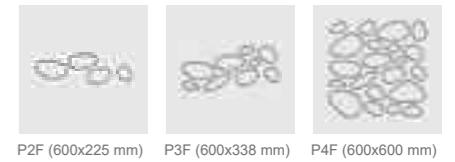
PDA22



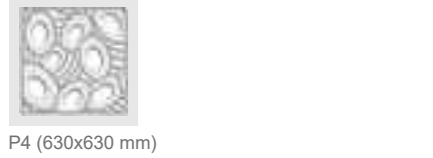
PDA21F



PDA22F



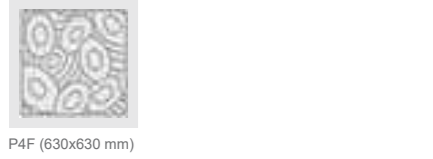
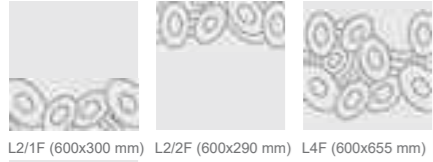
PDA23



PDA24



PDA23F



PDA24F



PDA25



P2/1 (300x252 mm) P2/2 (600x136 mm) P3/1 (400x368 mm)



P3/2 (600x368 mm) P4 (600x600 mm)



UN 5003



LAKIER LACK LACQER AA 19, 22 mm

PDA26



L3 (402 mm) P3/1 (388x414 mm) P3/2 (600x276 mm)



P4 (735x710 mm)



UN 5004



LAKIER LACK LACQER AA 19, 22 mm

PDA25F



P2/1F (300x252 mm) P2/2F (600x136 mm) P3/1F (400x368 mm)



P3/2F (600x368 mm) P4F (600x600 mm)



RAL 1013



PDA26F



L3F (402 mm) P3/1F (388x414 mm) P3/2F (600x276 mm)



P4F (735x710 mm)



UN 5003



PDA27



P2/1 (264x343 mm) P2/2 (152x600 mm) P2/3 (600x172 mm)



P3/1 (264x600 mm) P3/2 (600x258 mm) P3/3 (600x430 mm)



P4 (600x600 mm)



UN 4000



LAKIER
LACK
LACQER AA
19, 22 mm

PDA28



L2 (270 mm) L3 (420 mm) P1 (195x270 mm)



P3 (420x420 mm) P4 (720x720 mm)



HG 9700



LAKIER
LACK
LACQER AA
19, 22 mm

PDA27F



P2/1F (264x343 mm) P2/2F (152x600 mm) P2/3F (600x172 mm)



P3/1F (264x600 mm) P3/2F (600x258 mm) P3/3F (600x430 mm)



P4F (600x600 mm)



UN 2065, UN 5004



PDA28F



L2F (270 mm) L3F (420 mm) P1F (195x270 mm)



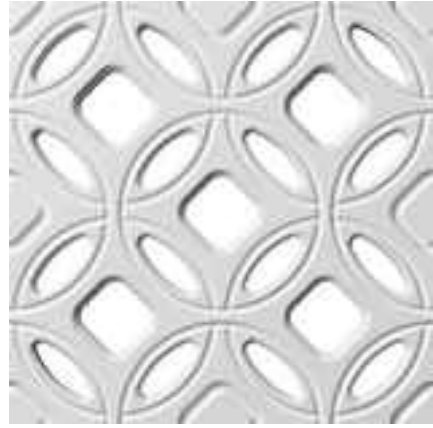
P3F (420x420 mm) P4F (720x720 mm)



PT 5001



PDA29



L2 (300 mm) P2 (300x300 mm) P4 (600x600 mm)



PDA30



L4 (1016 mm)

PDA30F



L4F (1016 mm)

PDA29F



L2F (300 mm) P2F (300x300 mm) P4F (600x600 mm)



HG 8810

PANELE DEKORACYJNE XLA

PL Panele dekoracyjne z nowej linii Moduloform - Ażurowe XLA są doskonałym rozwiązaniem dla indywidualistów, którzy cenią nowoczesny design. Znajdą także uznanie wśród osób poszukujących innowacyjnych rozwiązań aranżacyjnych dla przestrzeni w wymiarze makro. System XLA pozwala na stworzenie wnętrza, które odznacza się niepowtarzalnym charakterem. Panele w postaci subtelnej ścianki dzielącej sprawdzą się w każdej przestrzeni - zarówno w salonie, kuchni jak i biurze.

Zapraszamy do zapoznania się z ofertą wielkoformatowych paneli ażurowych XLA, dostępnych w wymiarze 1200 x 2400 mm (1200 x 2750 mm) oraz 1200 x 1200 mm. Wykończenie lakier struktura.

DECORATIVE PANEL XLA

EN Panels from the new Moduloform - openwork XLA product line - are ideal for individualists who appreciate modern design . They will also find recognition among people looking for innovative solutions for certain space arrangements in macro scale. The XLA panel allows to create the interior, which has an unique character. Panels as the subtle dividing wall - fit to every space - living room as well as kitchen and office.

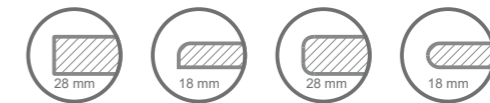
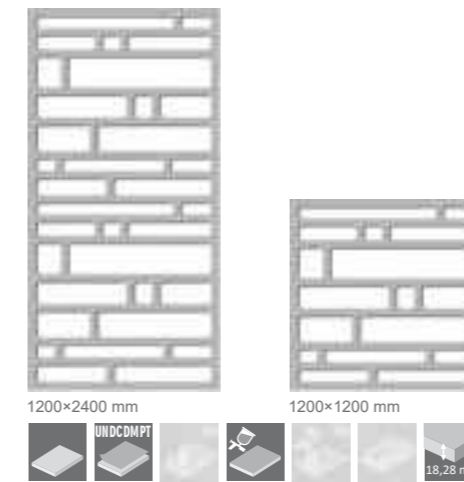
We invite you to make yourself familiar with a new range of large-format XLA openwork panels available in the dimension of 1200 x 2400 mm (1200 x 2750 mm) and 1200 x 1200 mm. Finishing: matt lacquere with structure.

DEKORATIVES PANEEL XLA

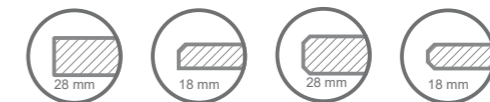
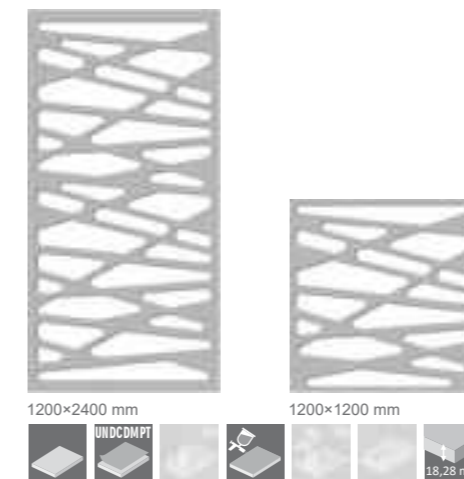
DE Dekorative Paneele aus dem neuen Sortiment "Moduloform – Ajourpaneele XLA" sind eine ausgezeichnete Lösung für die Individualisten die das moderne Desing bevorzugen. Neue Ajourpaneele werden sich bestimmt auch großes Interesse unter dem Leuten erfreuen, die nach den innovativen Innendekorationsmöglichkeiten für große Räume suchen. Das System XLA verleiht dem Raum einen einzigartigen charakter. Die Paneele in Form einer Zwischenwand bewähren sich in jedem Bereich – sowohl im Wohnzimmer, Küche als auch im Büro.

Bitte machen Sie sich vertraut mit unseren neuen Angebot über die grossformattigen Ajourpaneele XLA, die im Format 1200 x 2400 mm (1200 x 2750 mm) und 1200 x 1200 mm erhältlich sind. Ausführung: Matt lackierung mit Struktur.

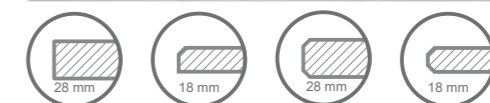
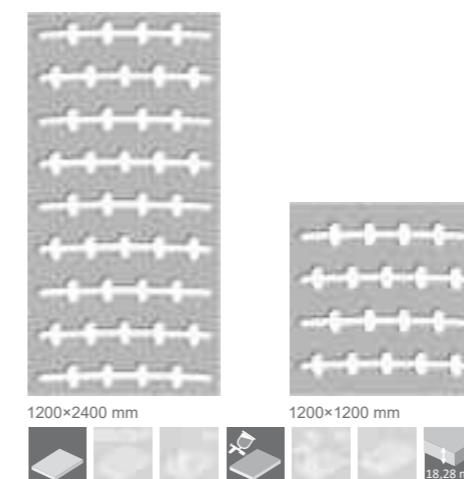
XLA 1 R

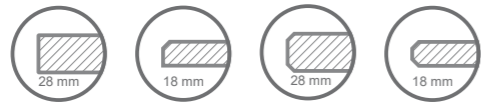


XLA 2 R

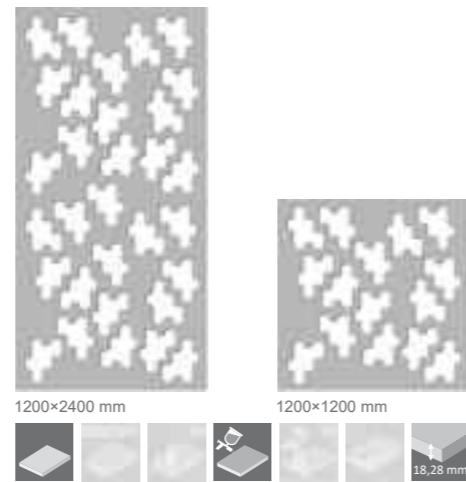


XLA 3 R

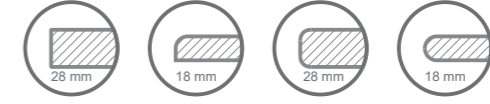
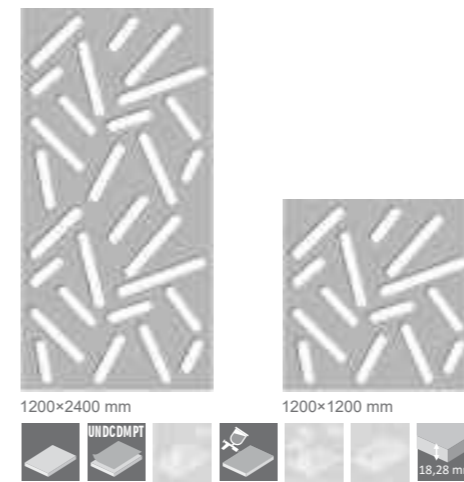




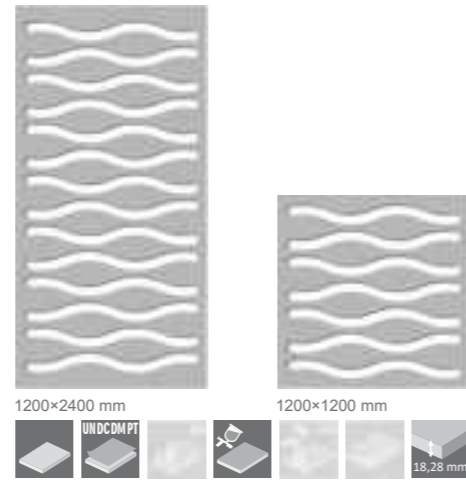
XLA 4 R



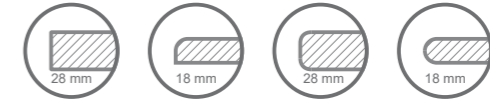
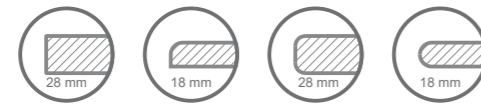
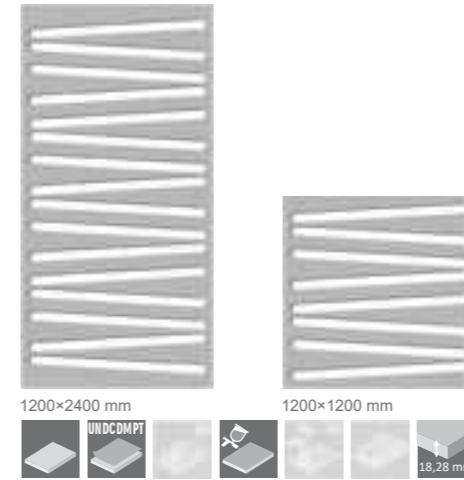
XLA 7 R



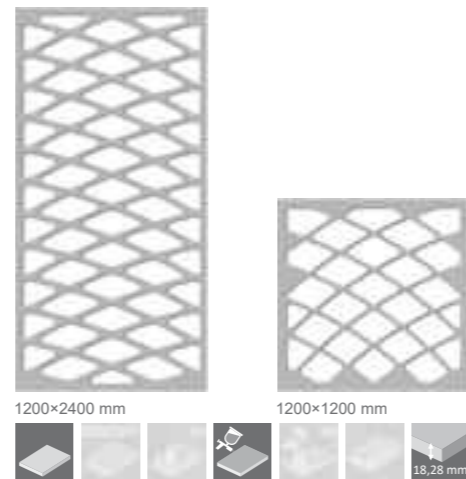
XLA 5 R



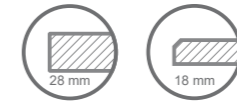
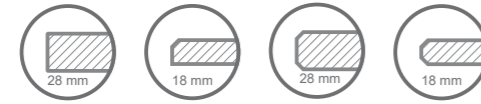
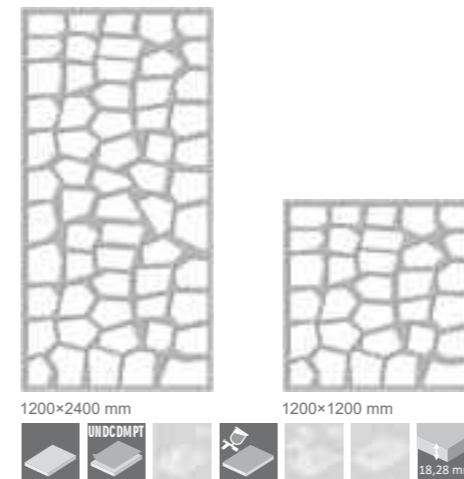
XLA 8 R

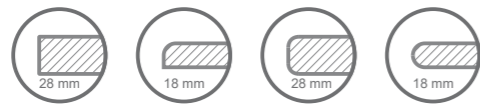


XLA 6 R

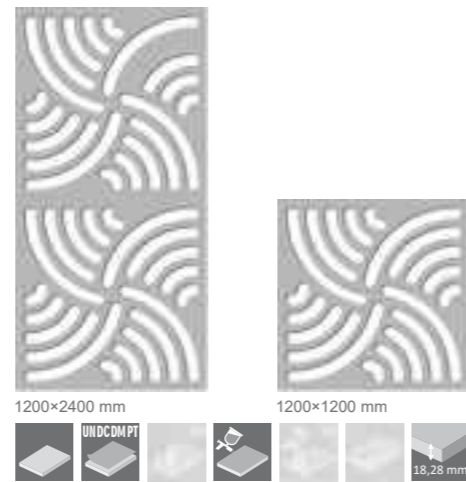


XLA 9 R

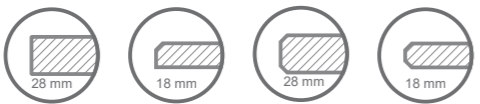
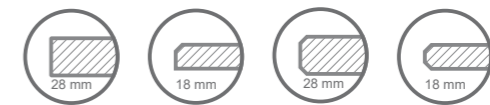
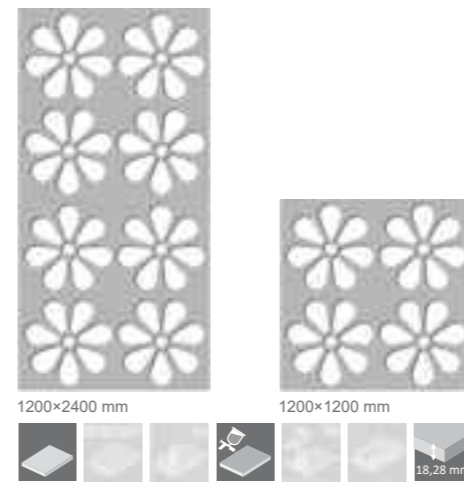




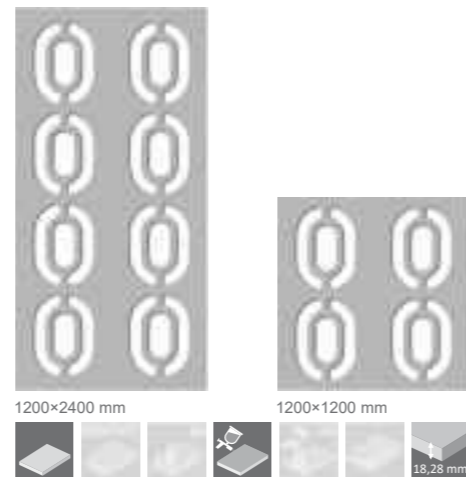
XLA 10 R



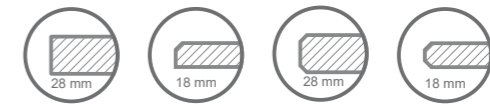
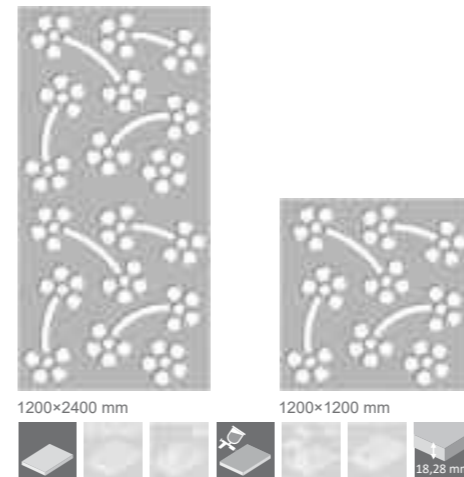
XLA 13 R



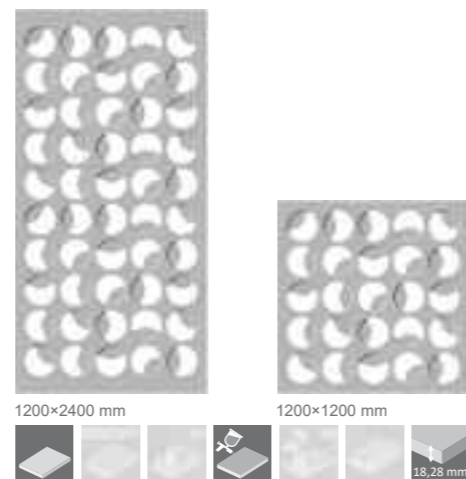
XLA 11 R



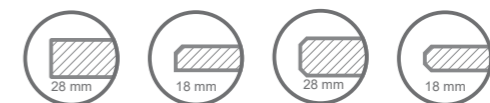
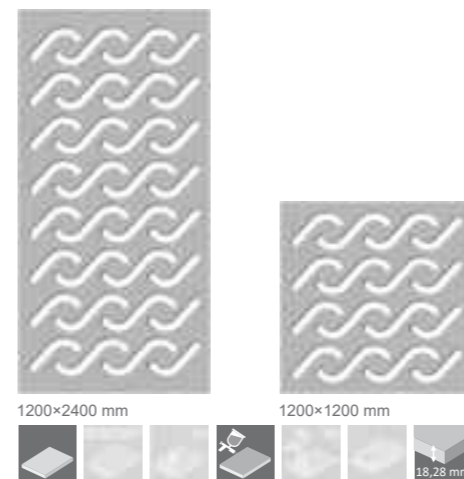
XLA 14 R

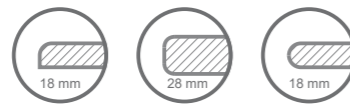


XLA 12 R

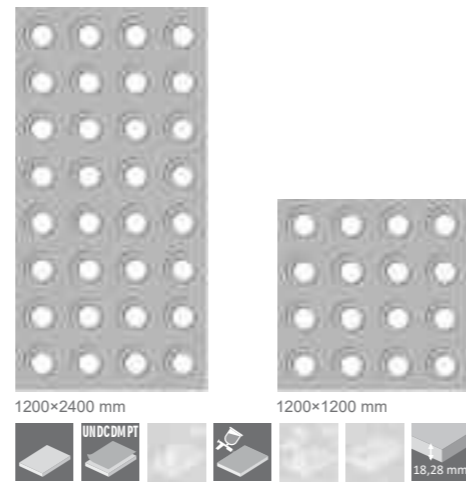


XLA 15 R

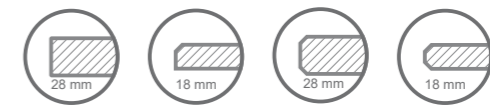
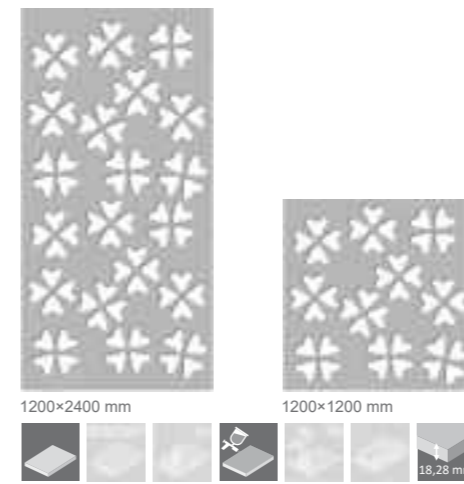




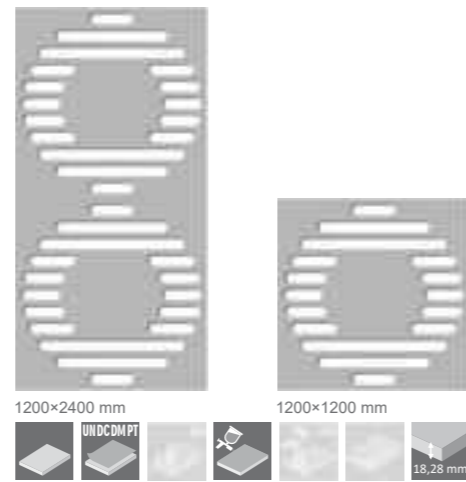
XLA 16 R



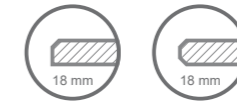
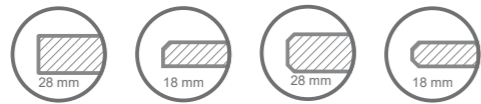
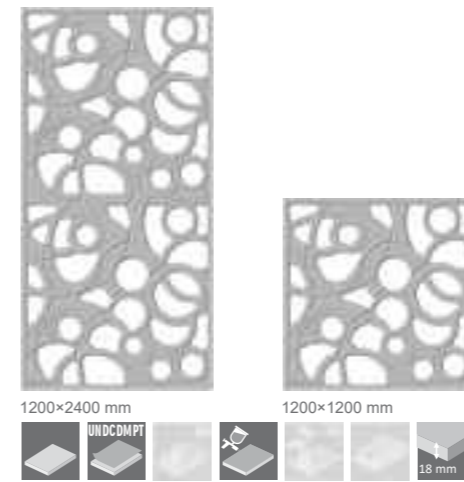
XLA 19 R



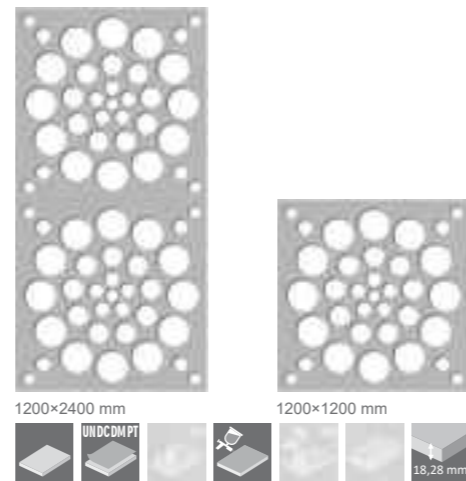
XLA 17 R



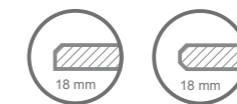
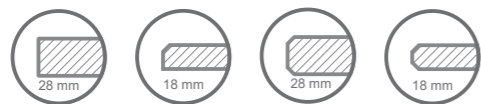
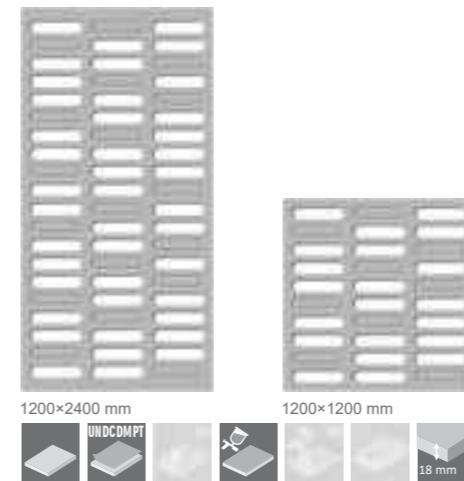
XLA 20 R

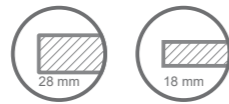


XLA 18 R



XLA 21 R





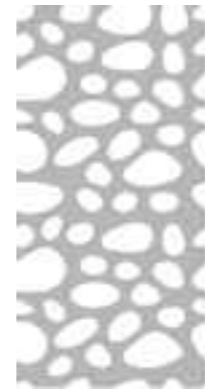
XLA 22 R



1200×2400 mm



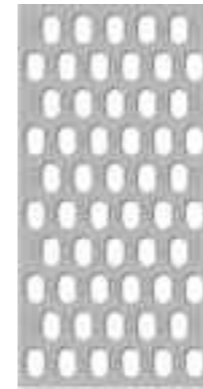
XLA 22



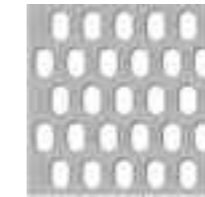
1200×2400 mm



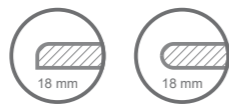
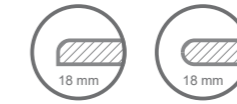
XLA 25 R



1200×2400 mm



1200×1200 mm



XLA 23 R



1200×2400 mm



XLA 22



1200×1200 mm



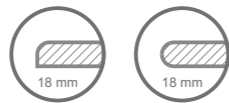
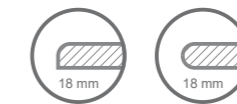
XLA 26 R



1200×2400 mm



1200×1200 mm



XLA 24 R



1200×2400 mm



XLA 27 R



1200×1200 mm



XLA 27 R

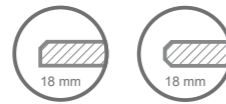


1200×2400 mm

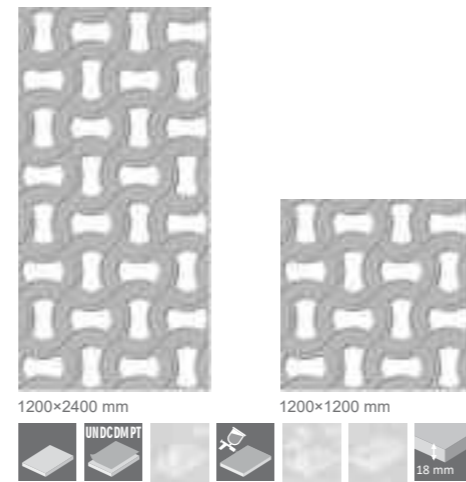


1200×1200 mm

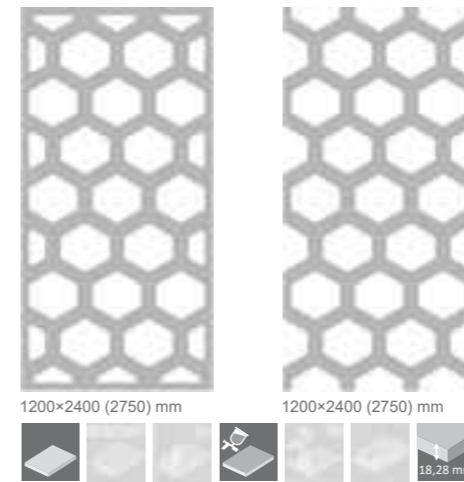




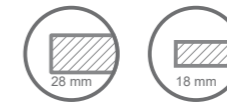
XLA 28 R



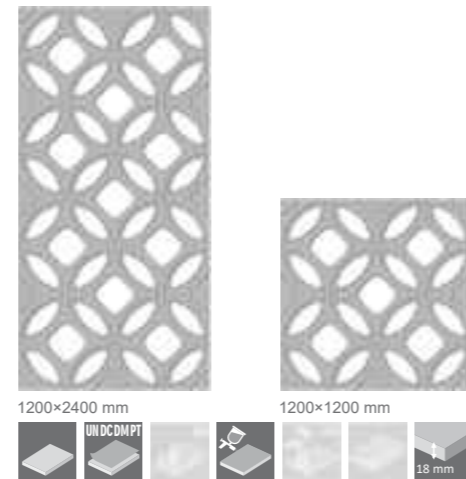
XLA 31 R



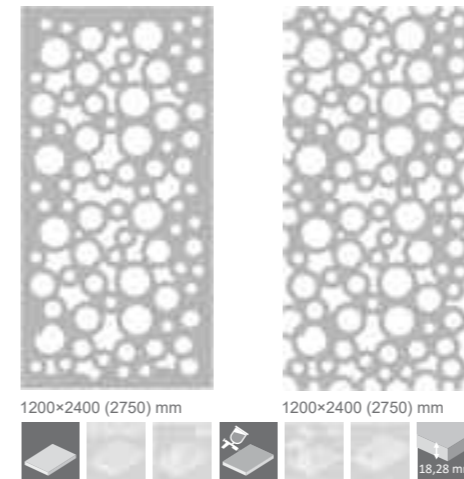
XLA 31



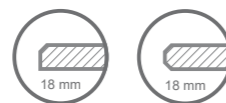
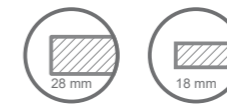
XLA 29 R



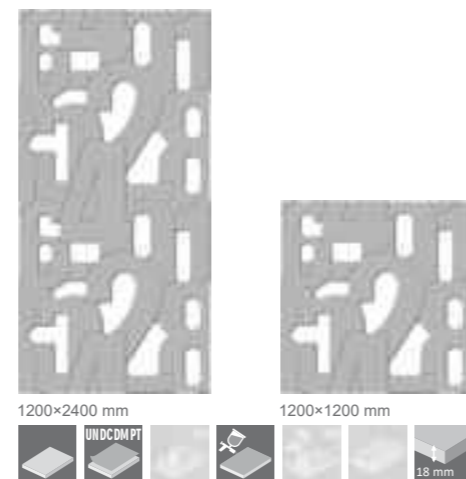
XLA 32 R



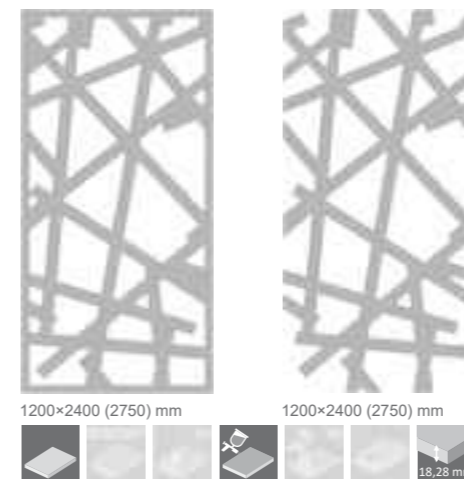
XLA 32



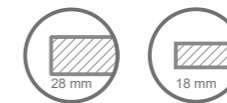
XLA 30 R

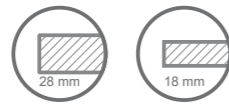


XLA 33 R



XLA 33





XLA 34 R

XLA 34



1200×2400 (2750) mm



1200×2400 (2750) mm



XLA 37 R

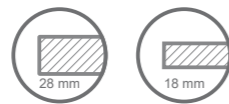
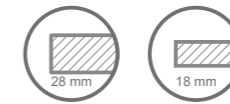
XLA 37



1200×2400 (2750) mm



1200×2400 (2750) mm



XLA 35 R

XLA 35



1200×2400 (2750) mm



1200×2400 (2750) mm



XLA 38 R

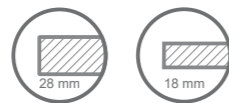
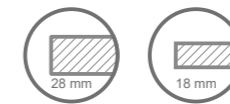
XLA 38



1200×2400 (2750) mm



1200×2400 (2750) mm



XLA 36 R

XLA 36



1200×2400 (2750) mm



1200×2400 (2750) mm



XLA 39 R

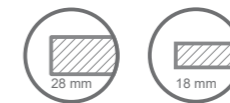
XLA 39

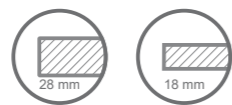


1200×2400 (2750) mm

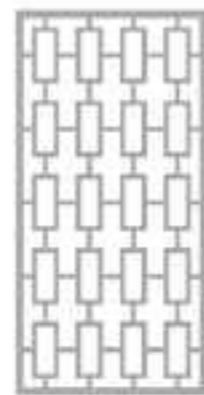


1200×2400 (2750) mm





XLA 40 R



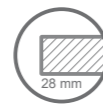
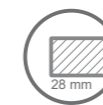
1200×2400 mm



NEW! XLA 43 R



1200×2400 (2750) mm



XLA 41 R **NEW!**



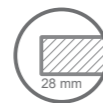
1200×2400 (2750) mm



NEW! XLA 44 R



1200×2400 (2750) mm



XLA 42 R **NEW!**



1200×2400 (2750) mm



XLA 42 R



Facebook



Instagram



LinkedIn



www.proform.eu



www.alvic.com.pl



YouTube



Showroom Proform
PL 43-190 Mikołów, Reymonta 11 B

e-mail: info@proform.eu
www.proform.eu